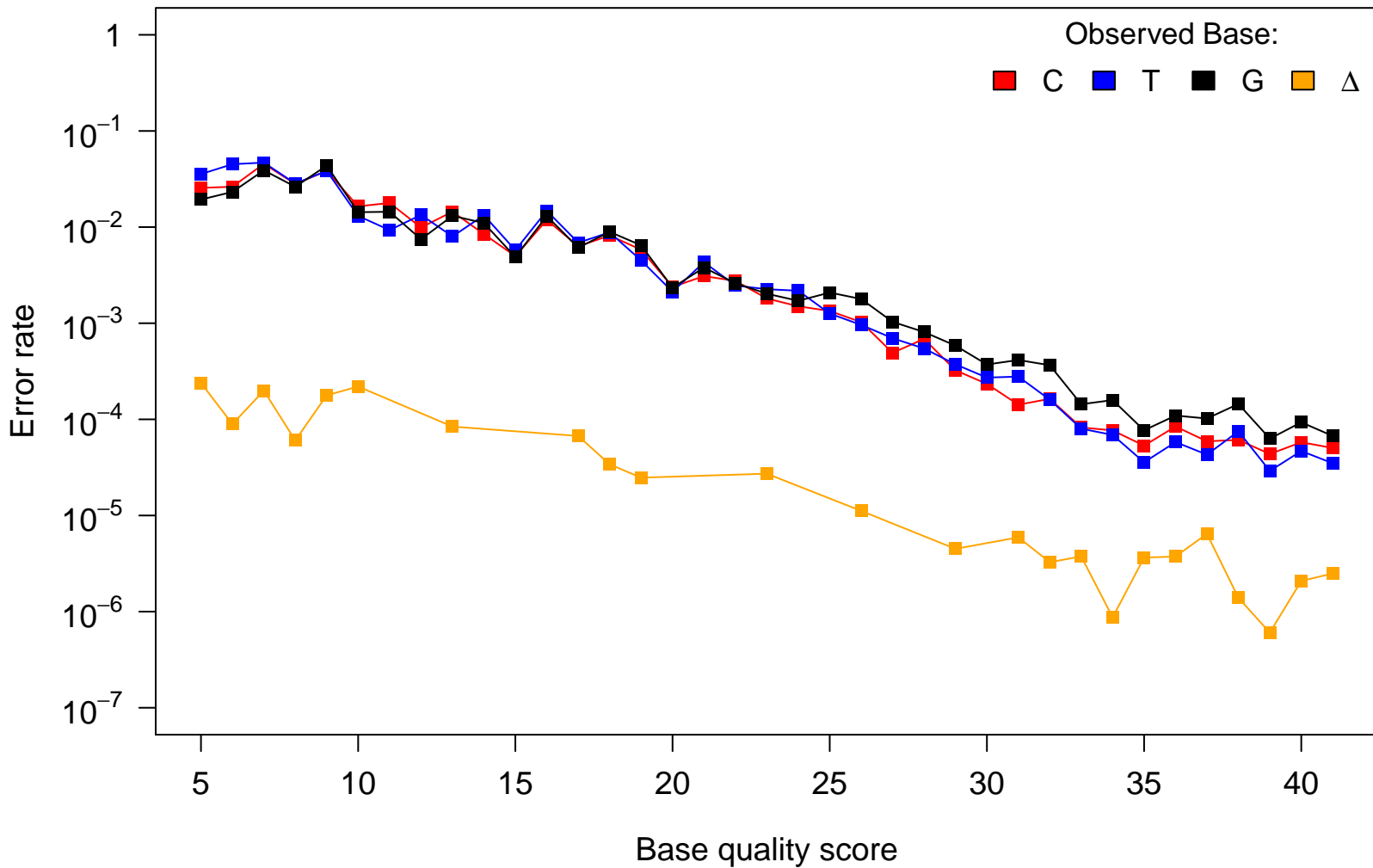


# Reference Base: A

Observed Base:

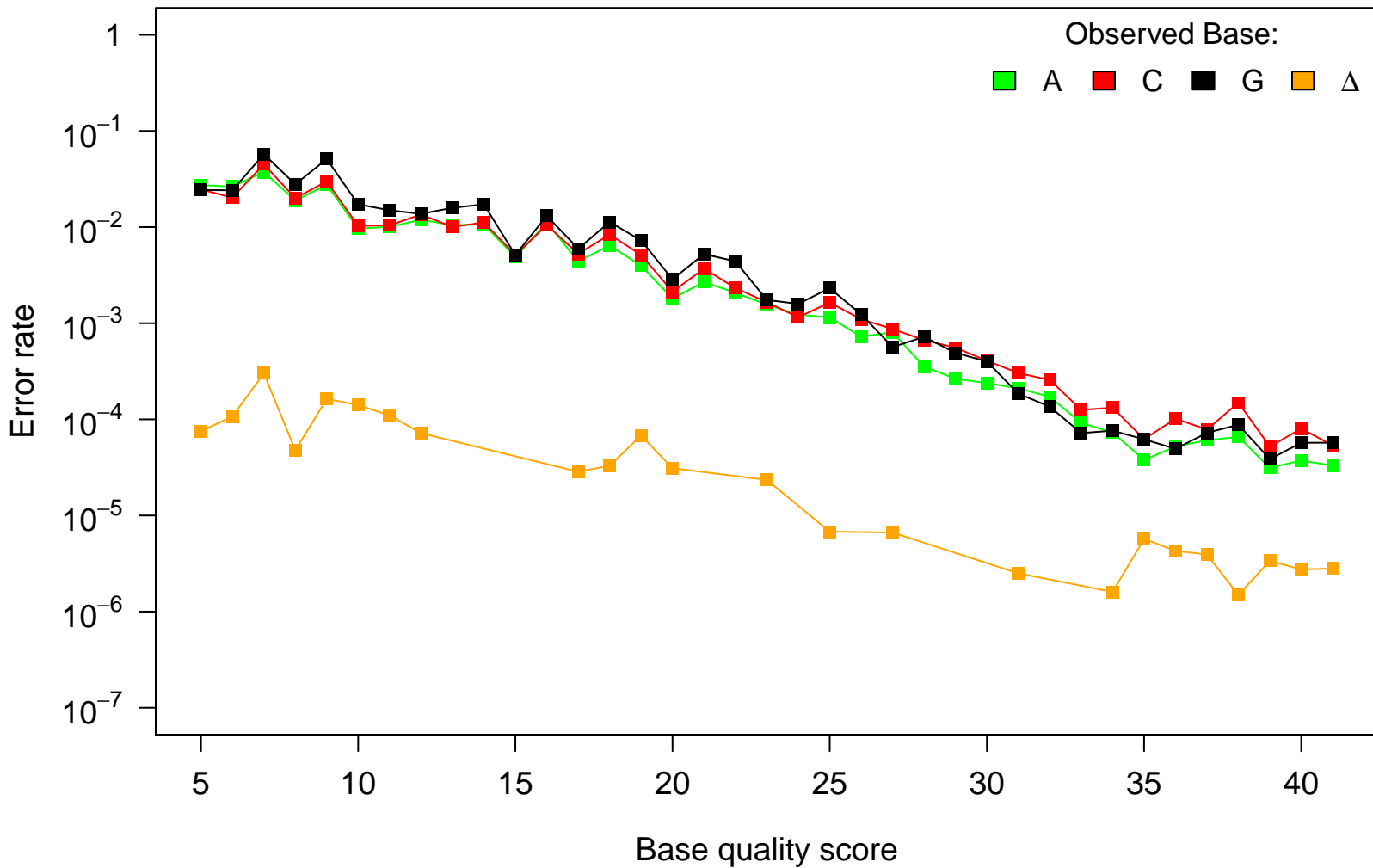
C T G  $\Delta$



# Reference Base: T

Observed Base:

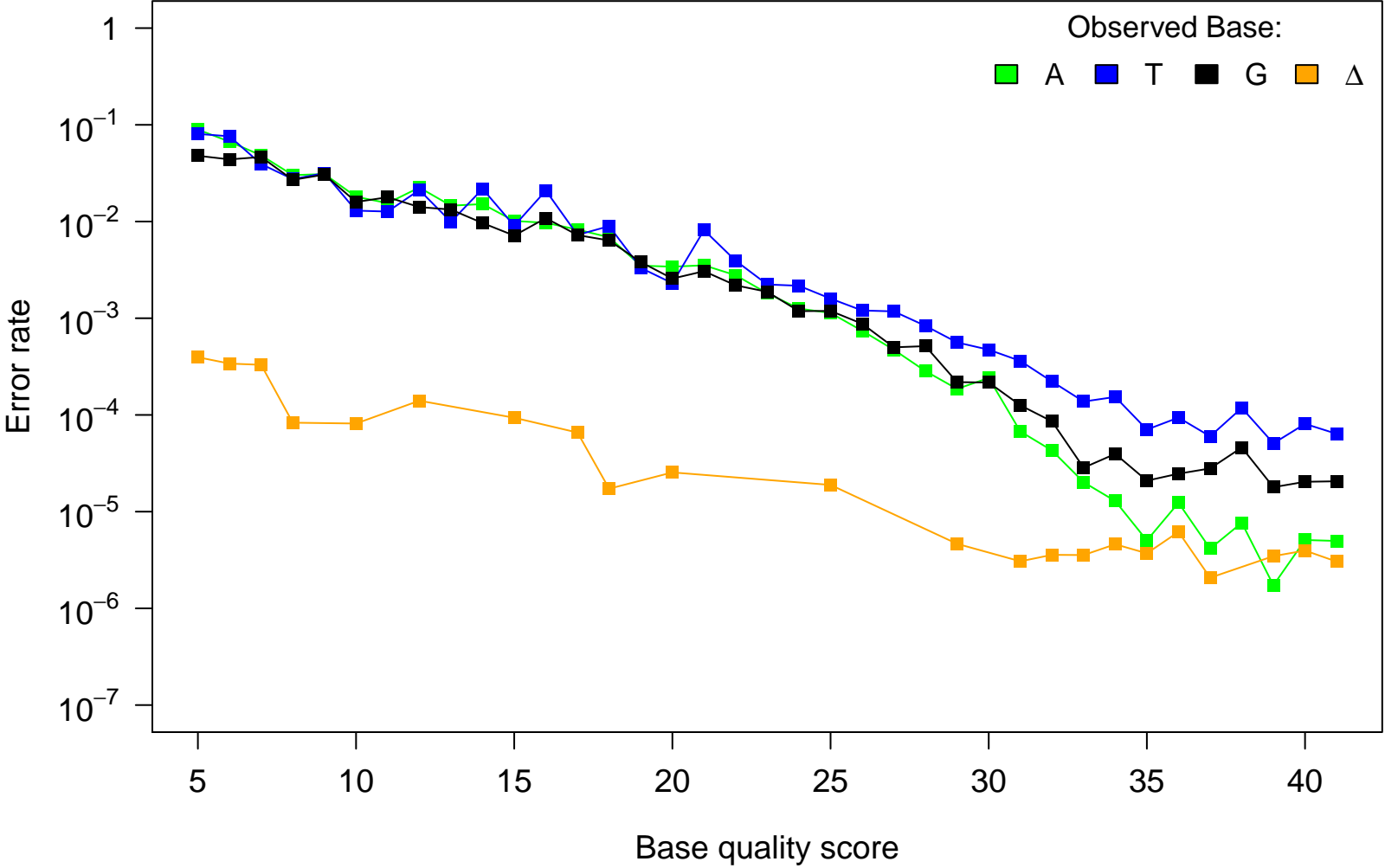
■ A ■ C ■ G ■ Δ



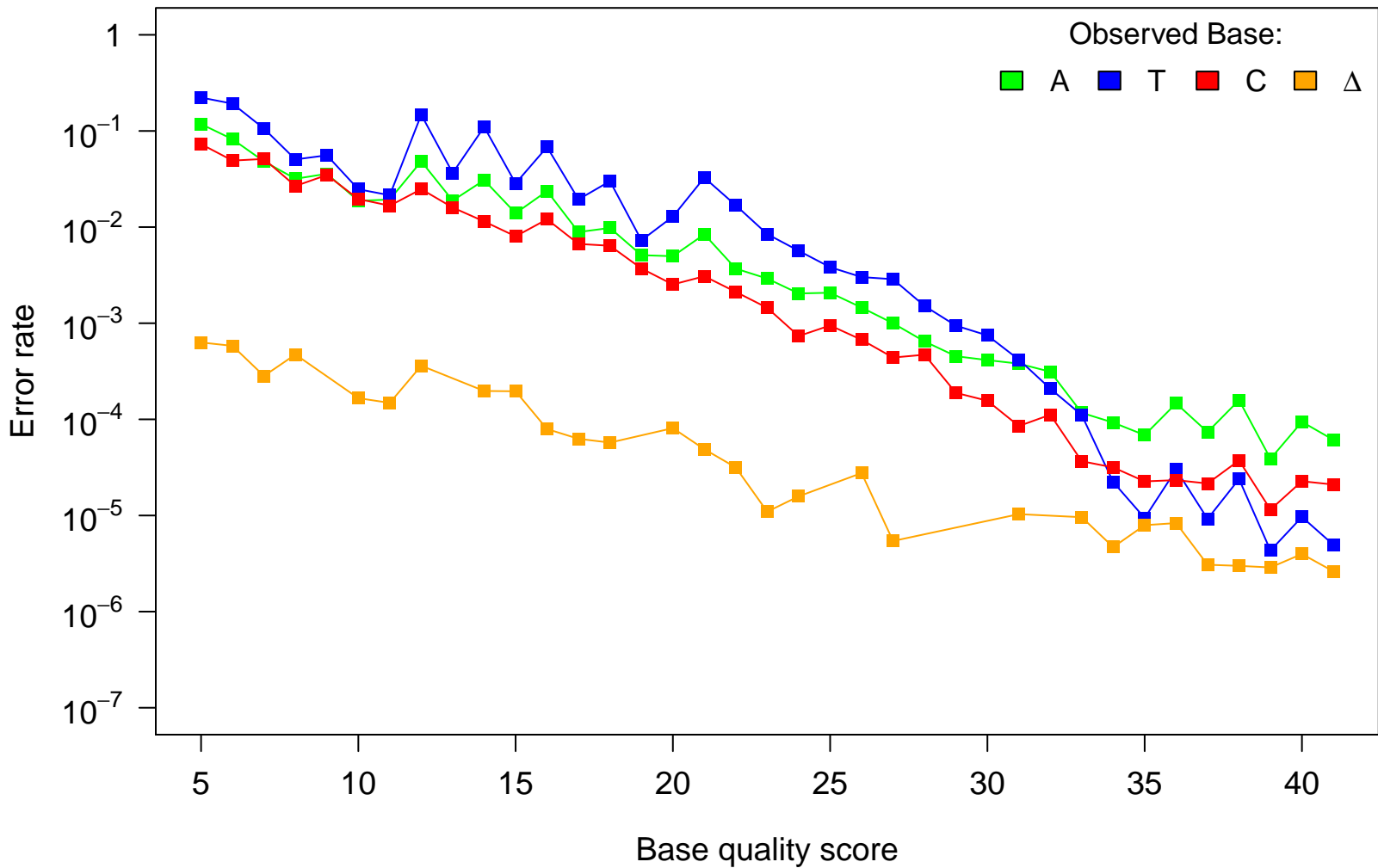
# Reference Base: C

Observed Base:

- A
- T
- G
- $\Delta$



# Reference Base: G



Reference Base:  $\Delta$

Observed Base:

■ A ■ T ■ C ■ G

