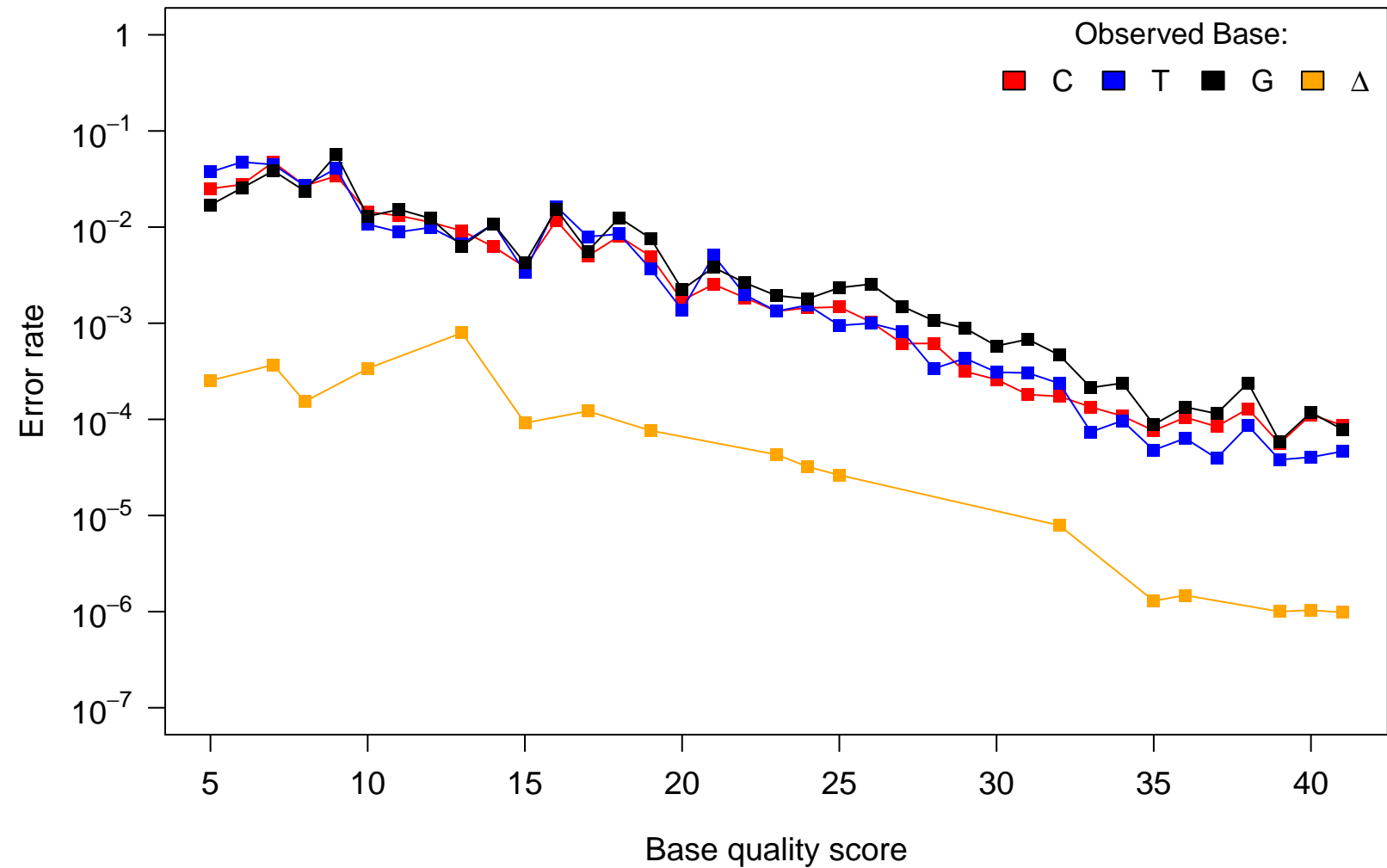


# Reference Base: A

Observed Base:

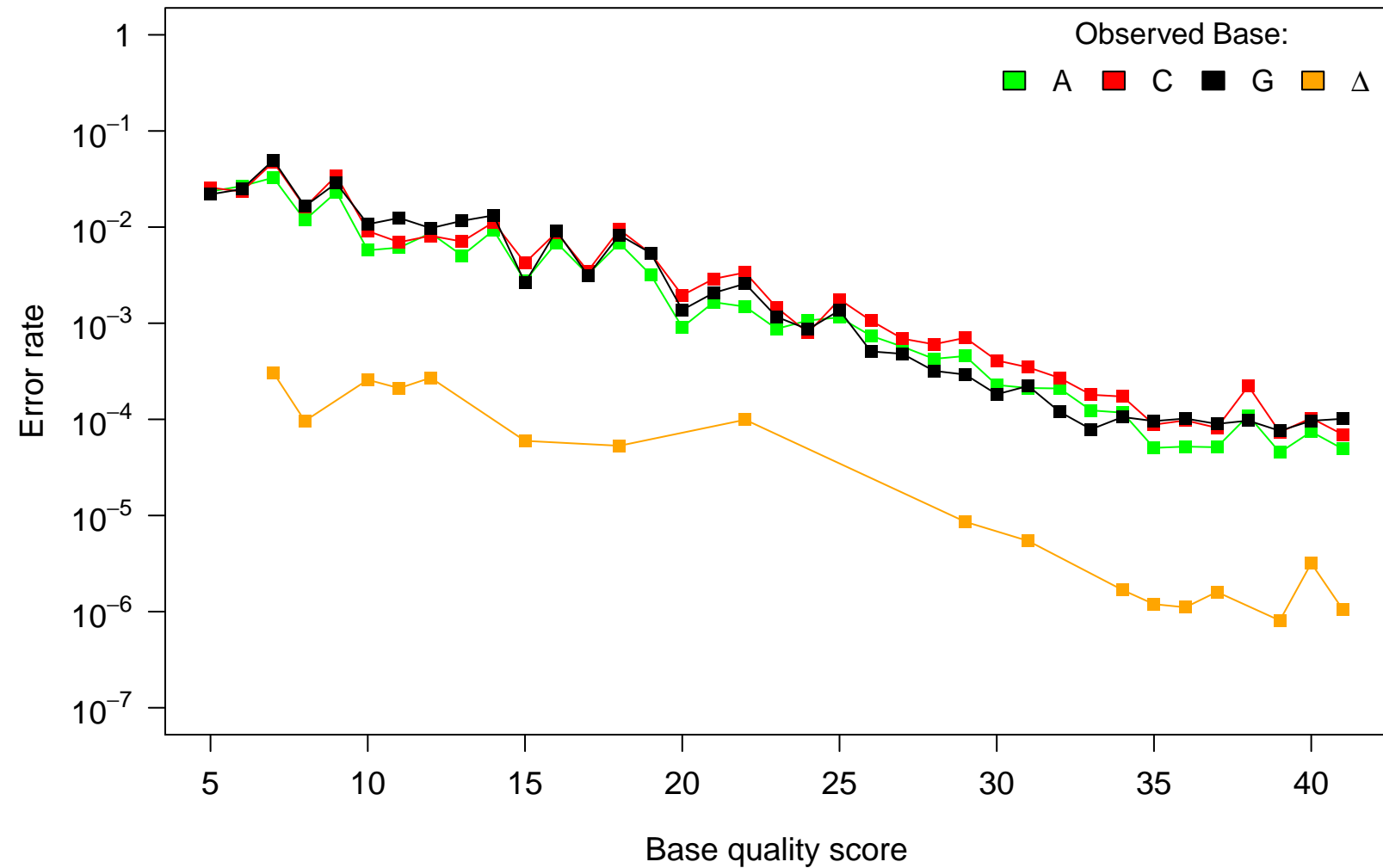
C T G Δ



# Reference Base: T

Observed Base:

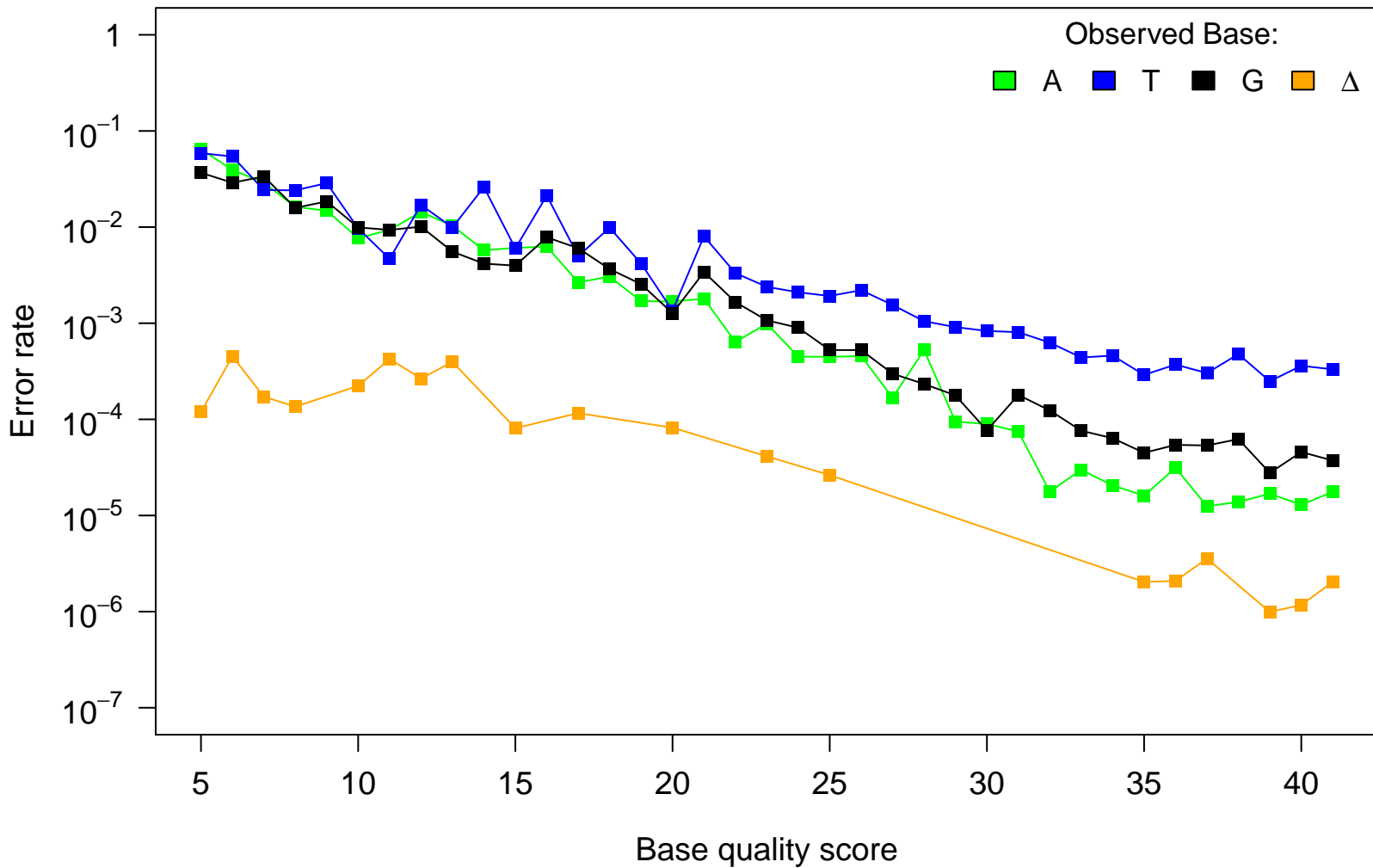
■ A ■ C ■ G ■ Δ



# Reference Base: C

Observed Base:

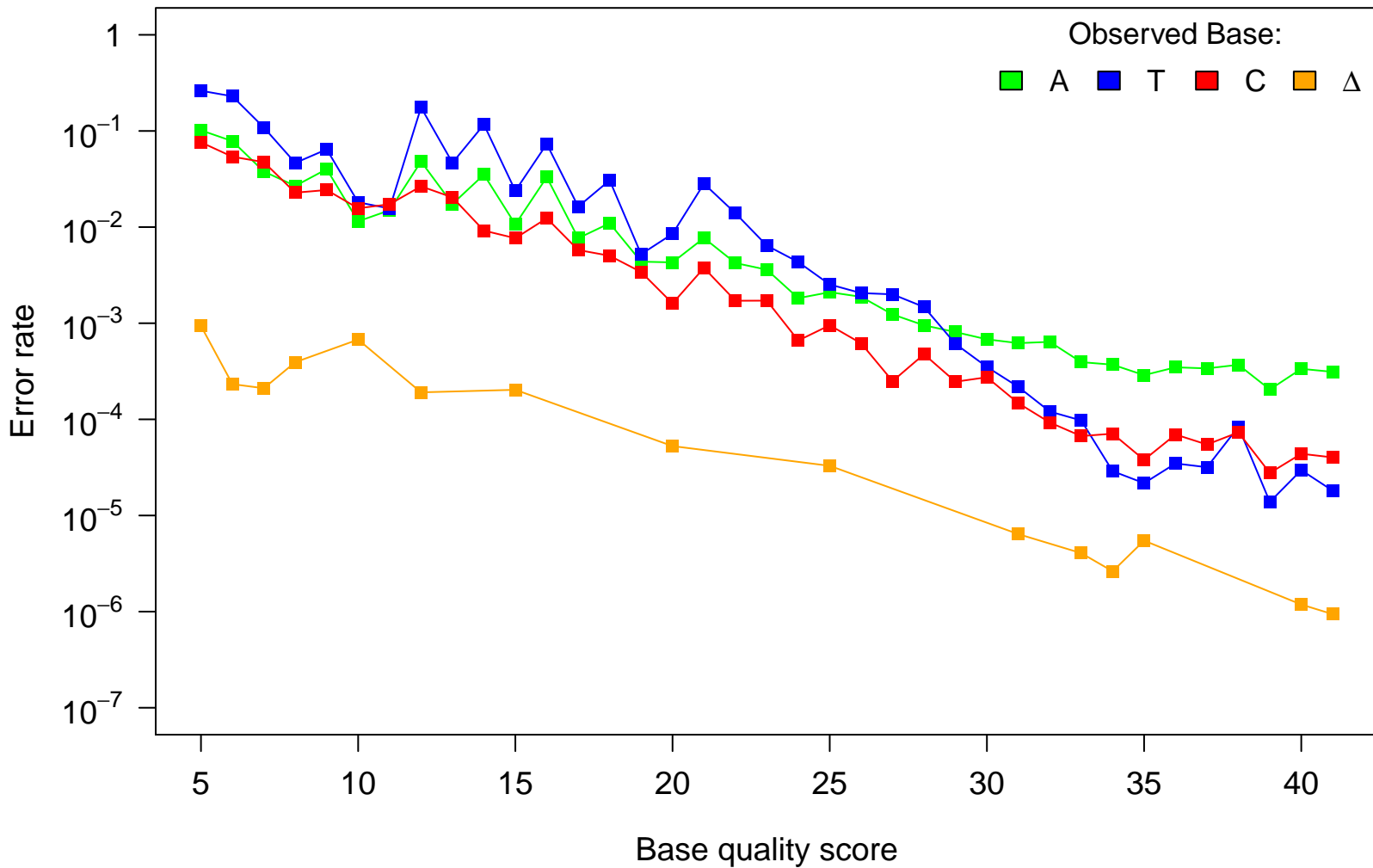
A T G  $\Delta$



# Reference Base: G

Observed Base:

■ A ■ T ■ C ■ Δ



Reference Base:  $\Delta$

Observed Base:

■ A ■ T ■ C ■ G

