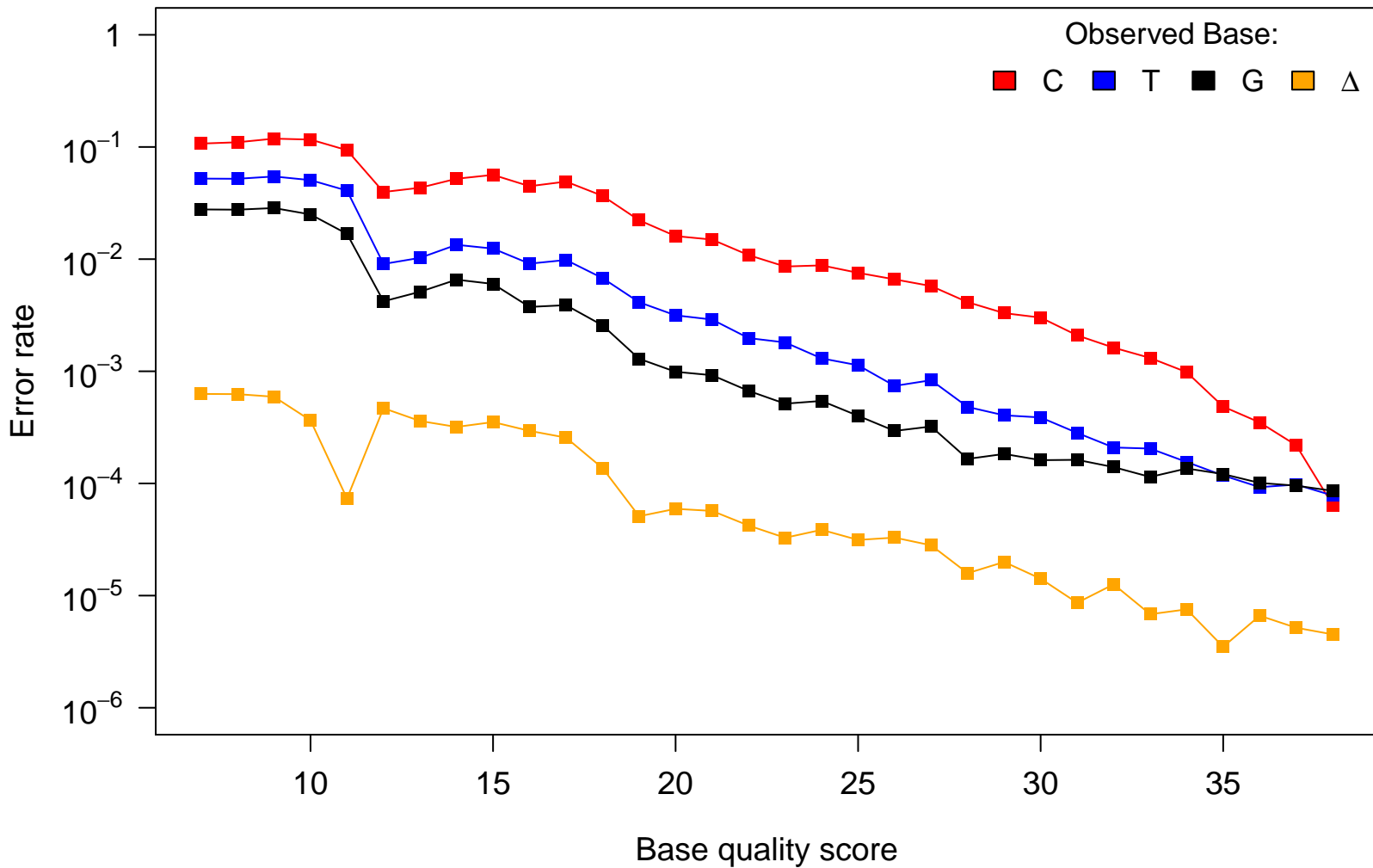


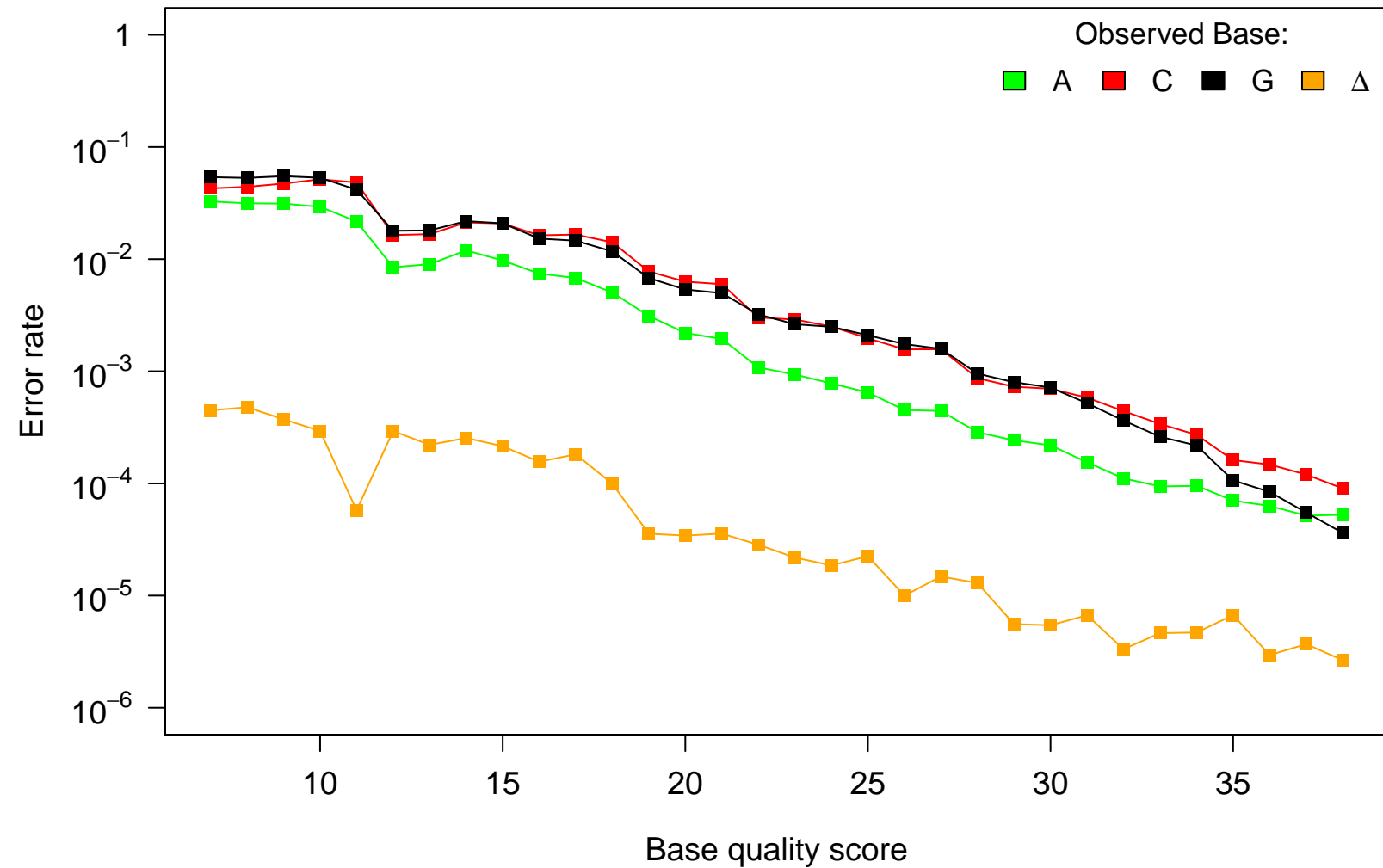
# Reference Base: A



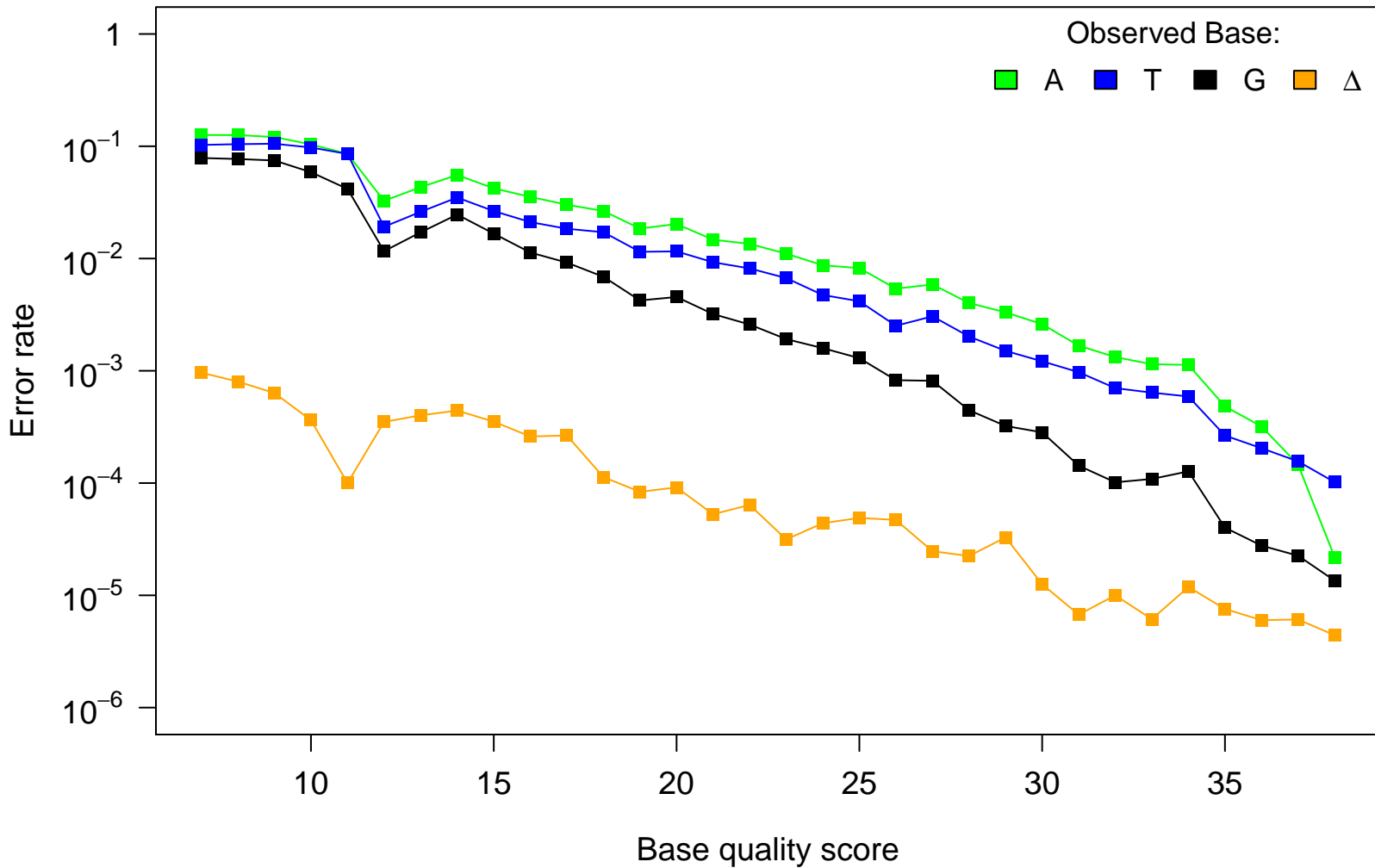
# Reference Base: T

Observed Base:

A C G  $\Delta$



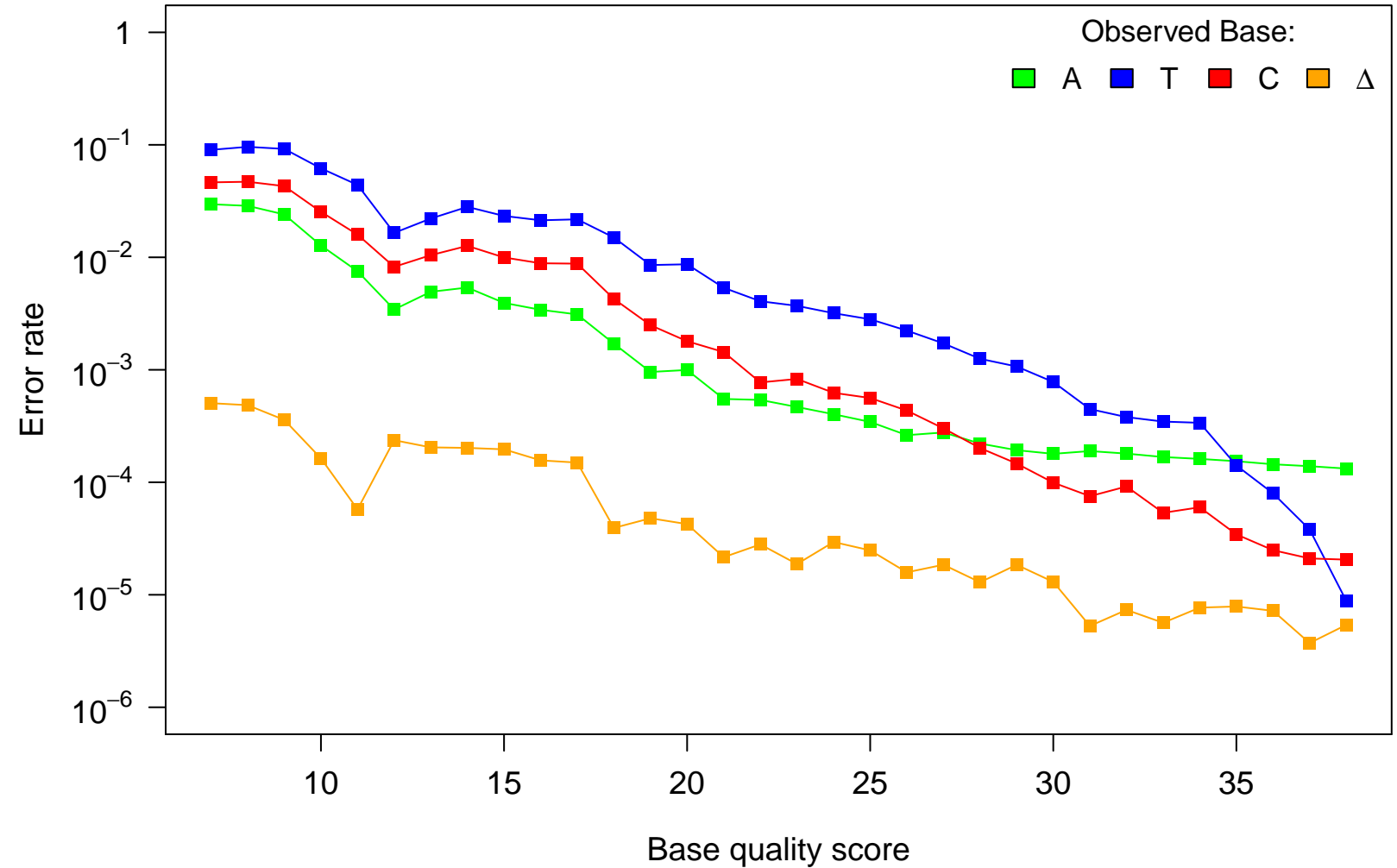
# Reference Base: C



# Reference Base: G

Observed Base:

■ A ■ T ■ C ■ Δ



Reference Base:  $\Delta$

Observed Base:

A T C G

Error rate

1  
 $10^{-1}$   
 $10^{-2}$   
 $10^{-3}$   
 $10^{-4}$   
 $10^{-5}$   
 $10^{-6}$

10 15 20 25 30 35

Base quality score

