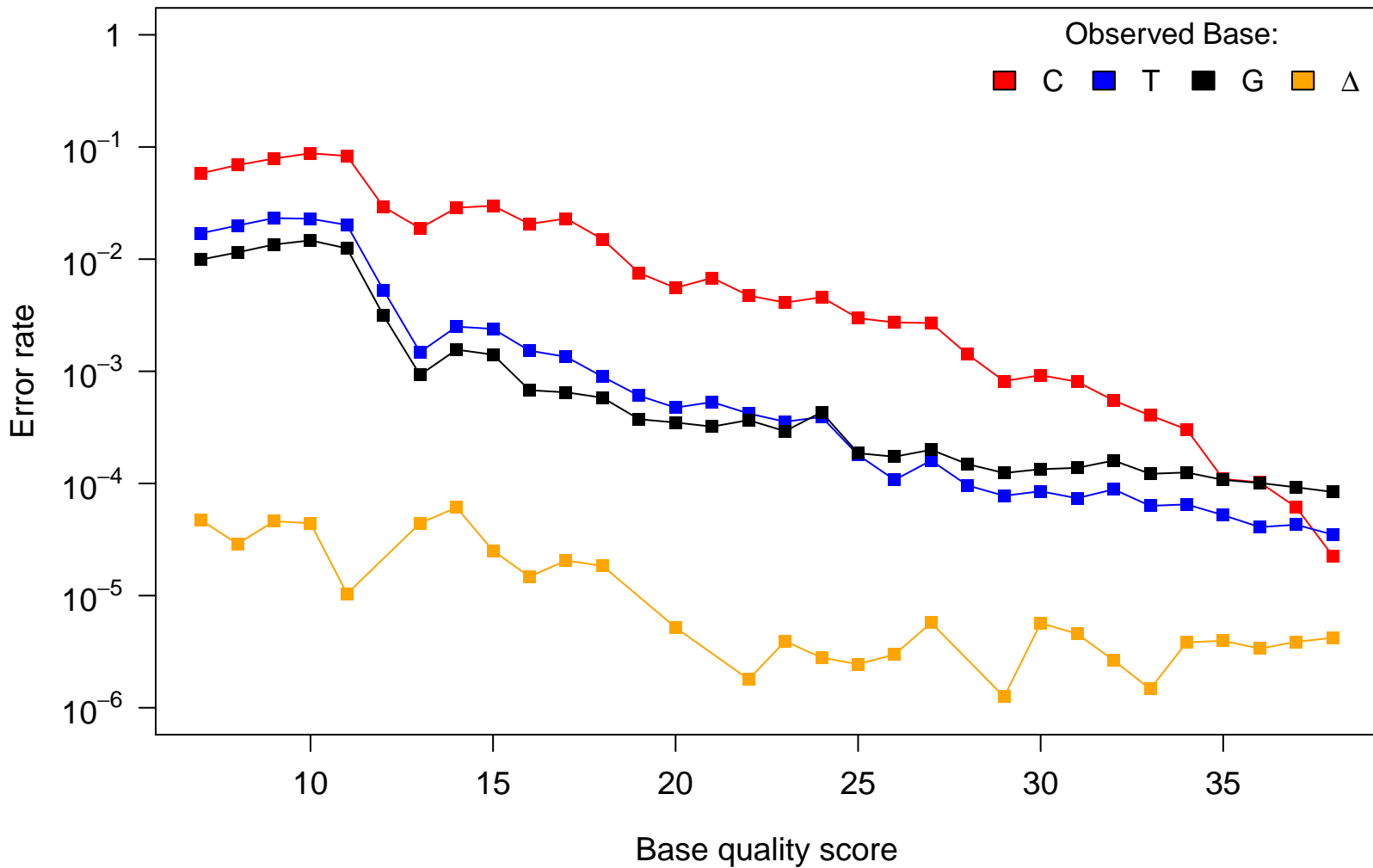


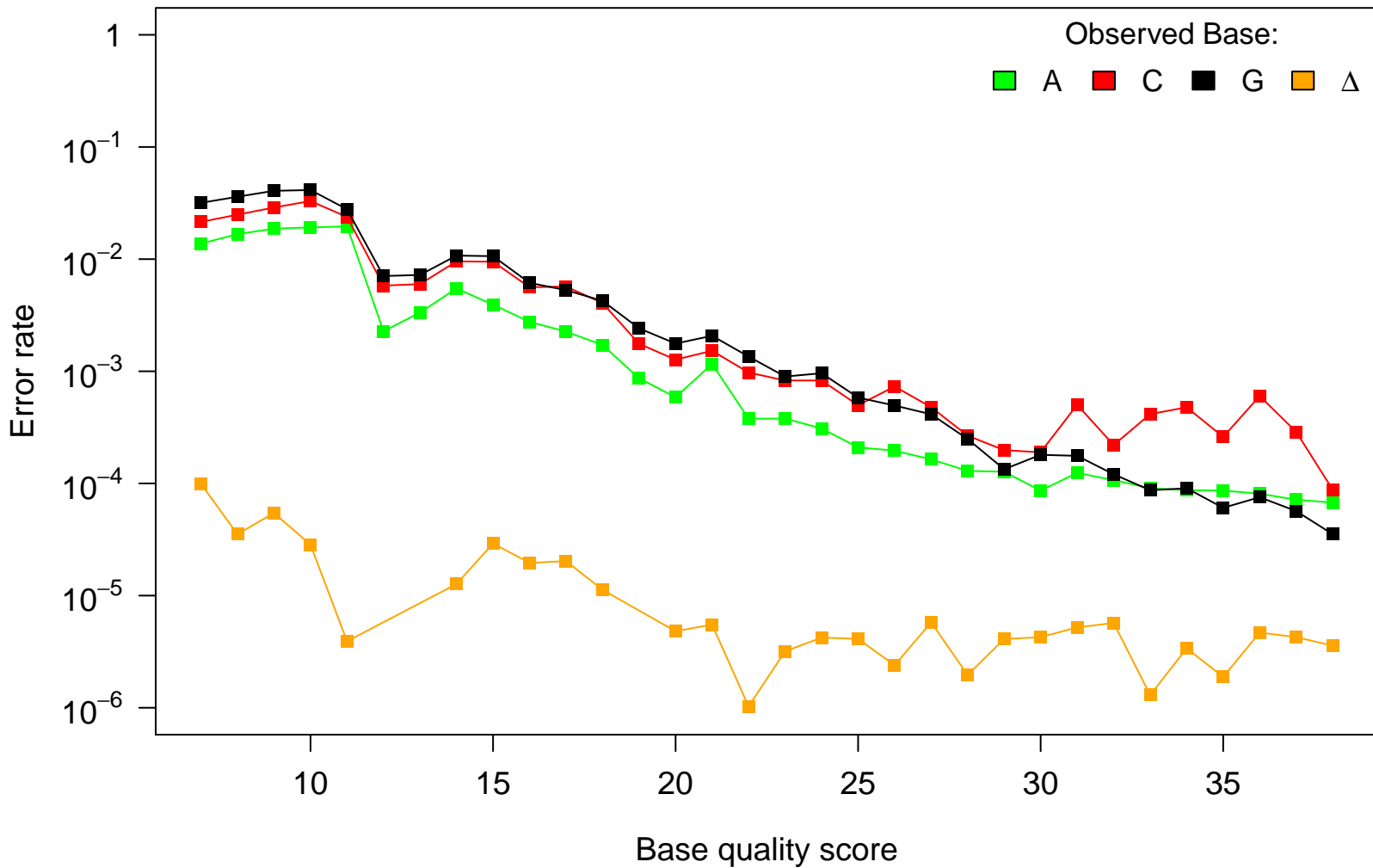
# Reference Base: A

Observed Base:

■ C ■ T ■ G ■ Δ



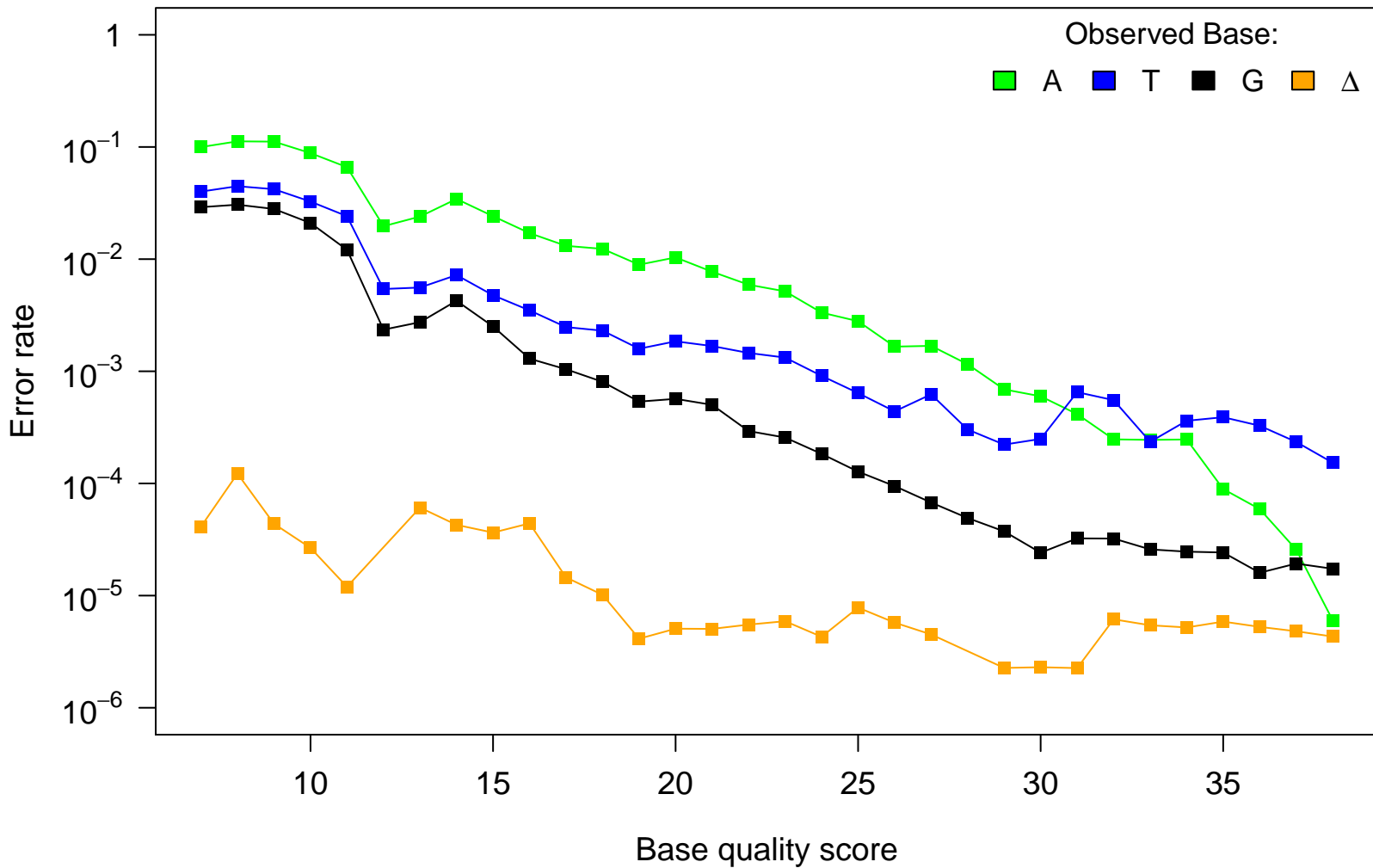
# Reference Base: T



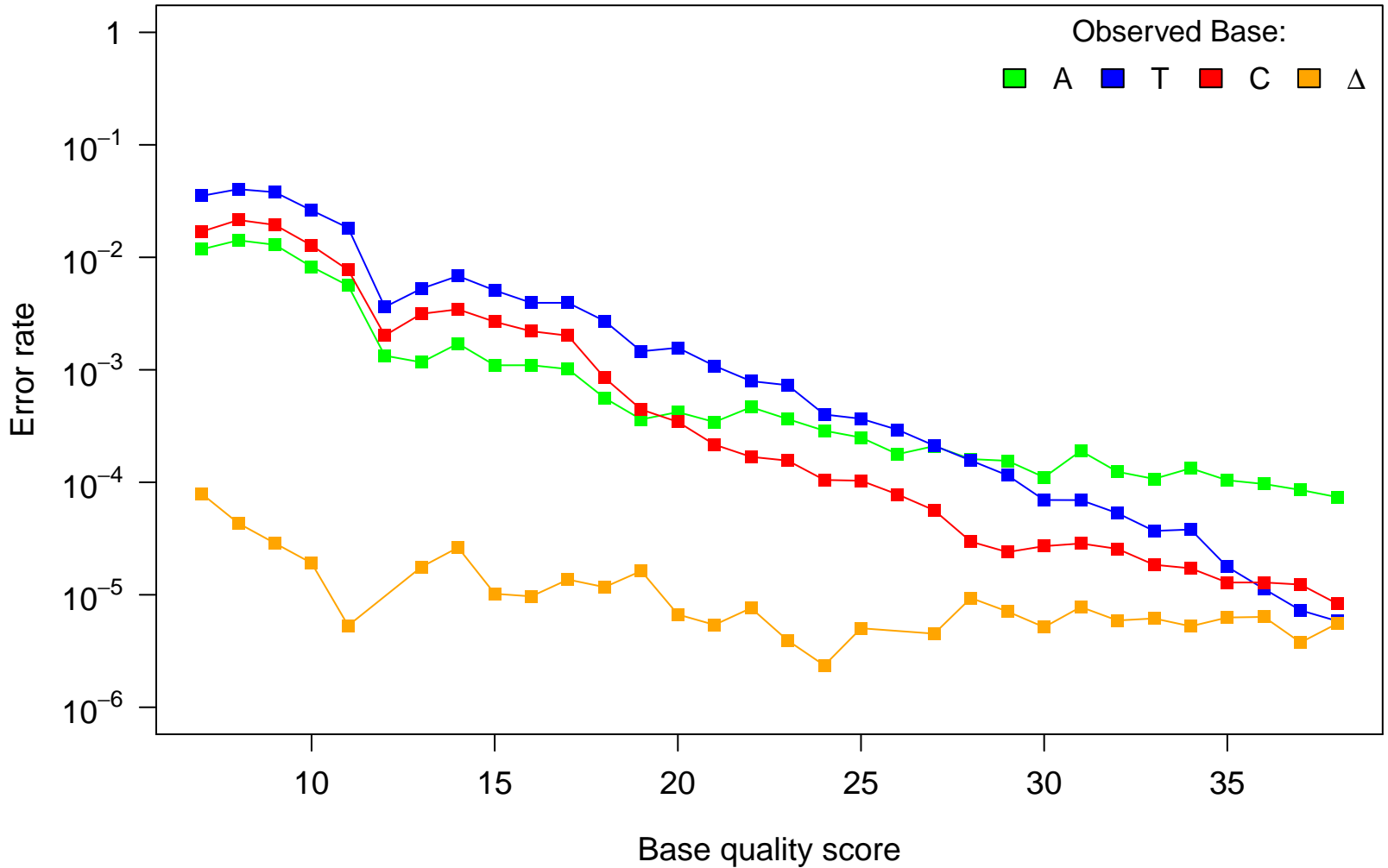
# Reference Base: C

Observed Base:

■ A ■ T ■ G ■ Δ



# Reference Base: G



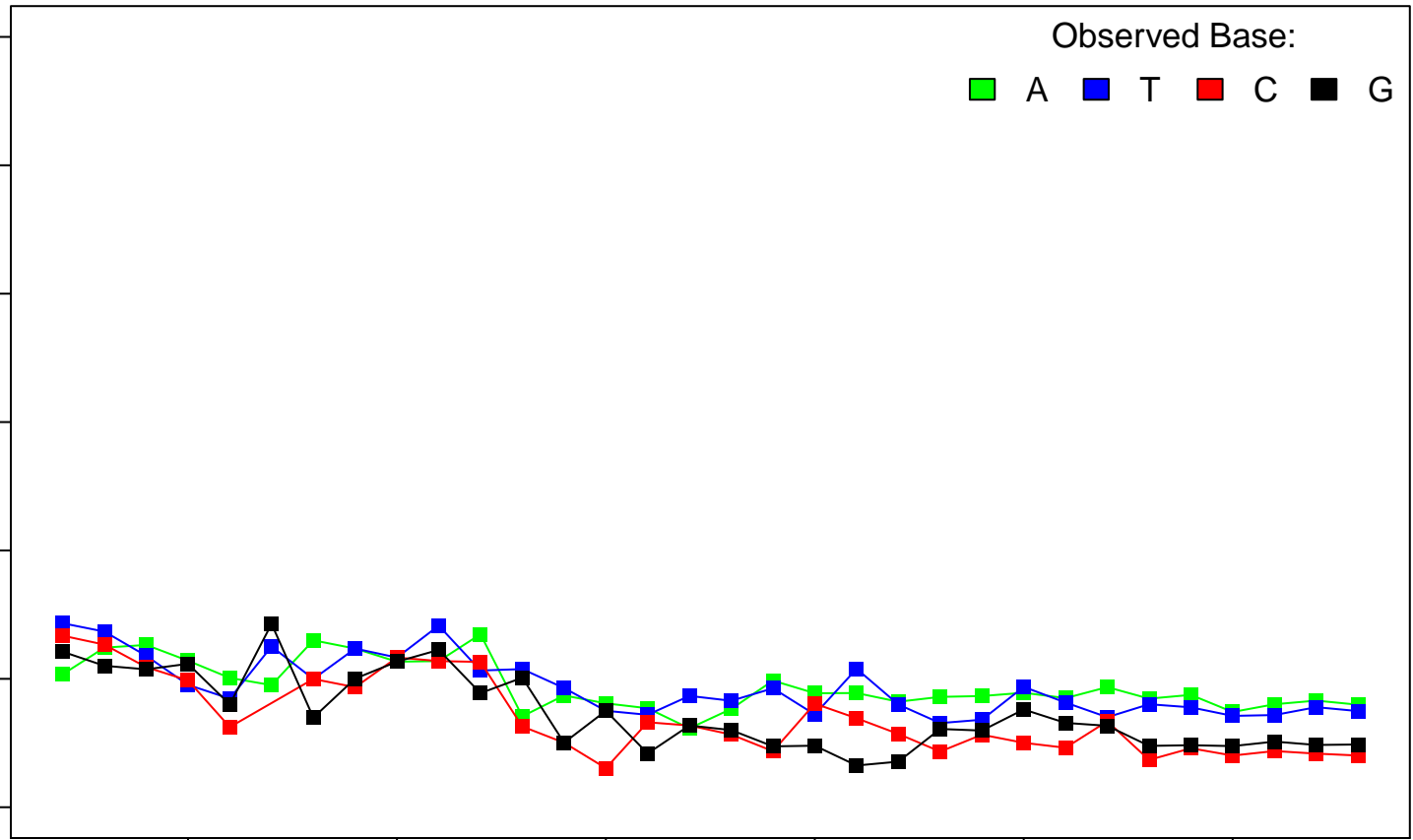
Reference Base:  $\Delta$

Observed Base:

A T C G

Error rate

1  
 $10^{-1}$   
 $10^{-2}$   
 $10^{-3}$   
 $10^{-4}$   
 $10^{-5}$   
 $10^{-6}$



Base quality score