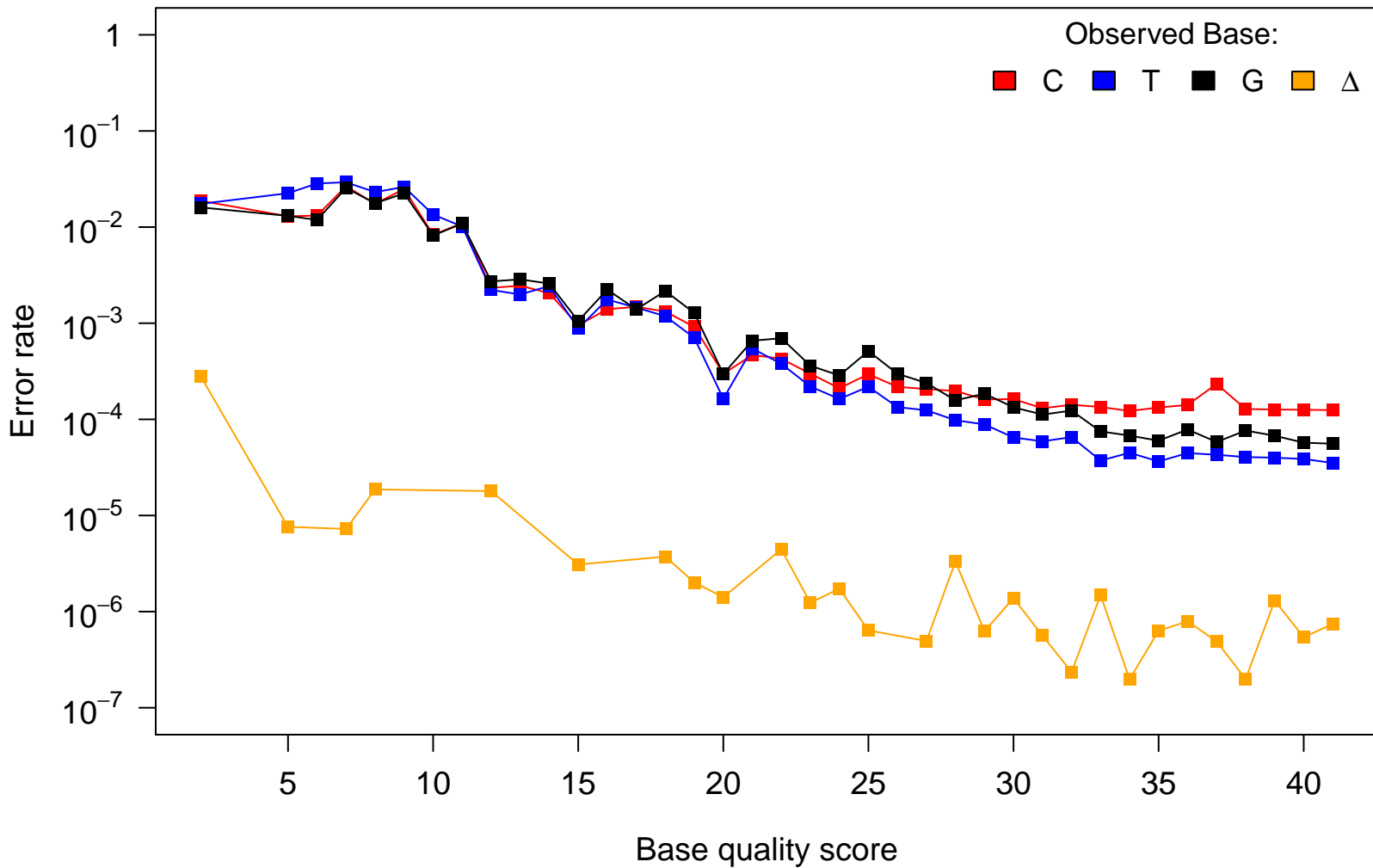


# Reference Base: A

Observed Base:

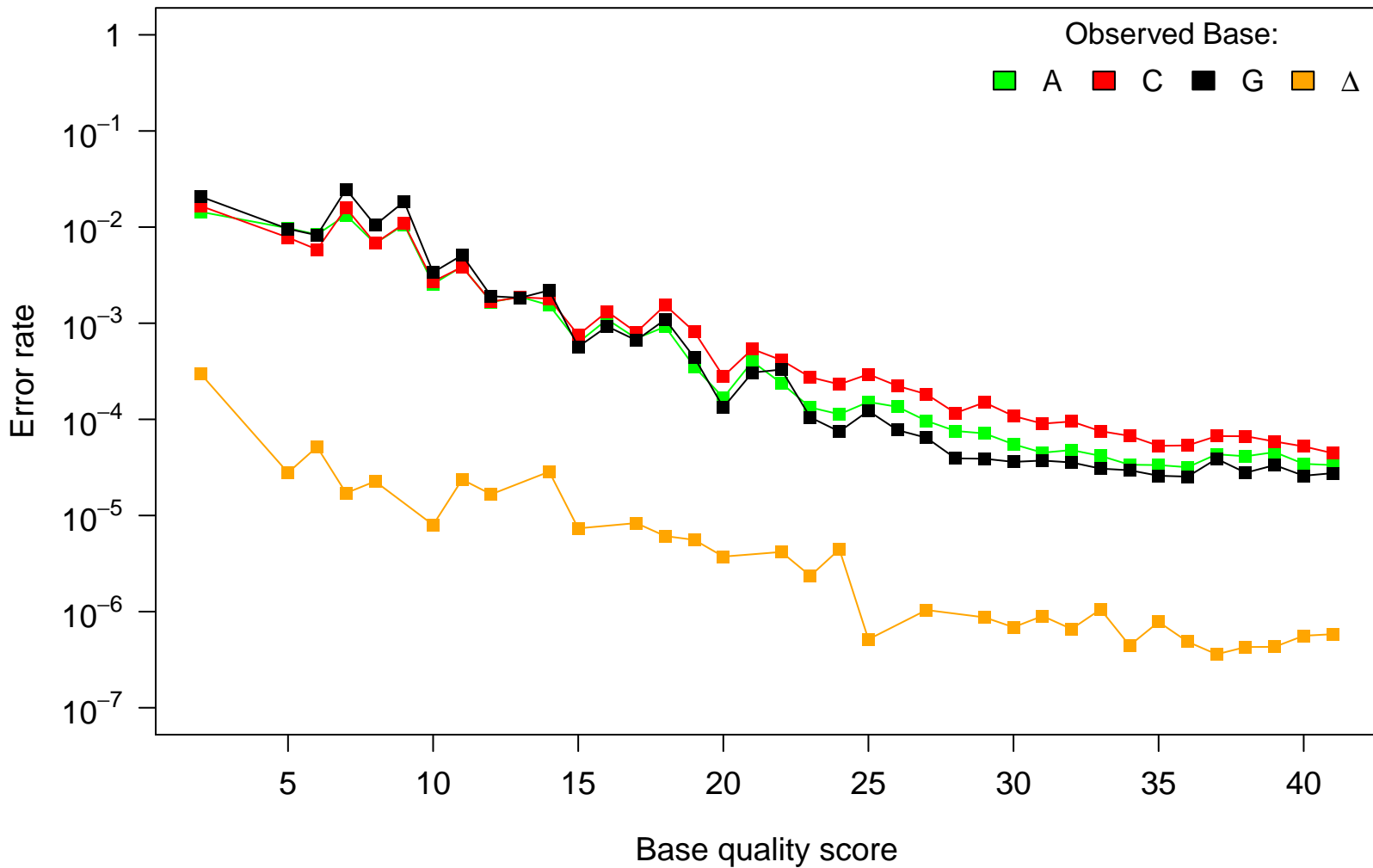
C T G Δ



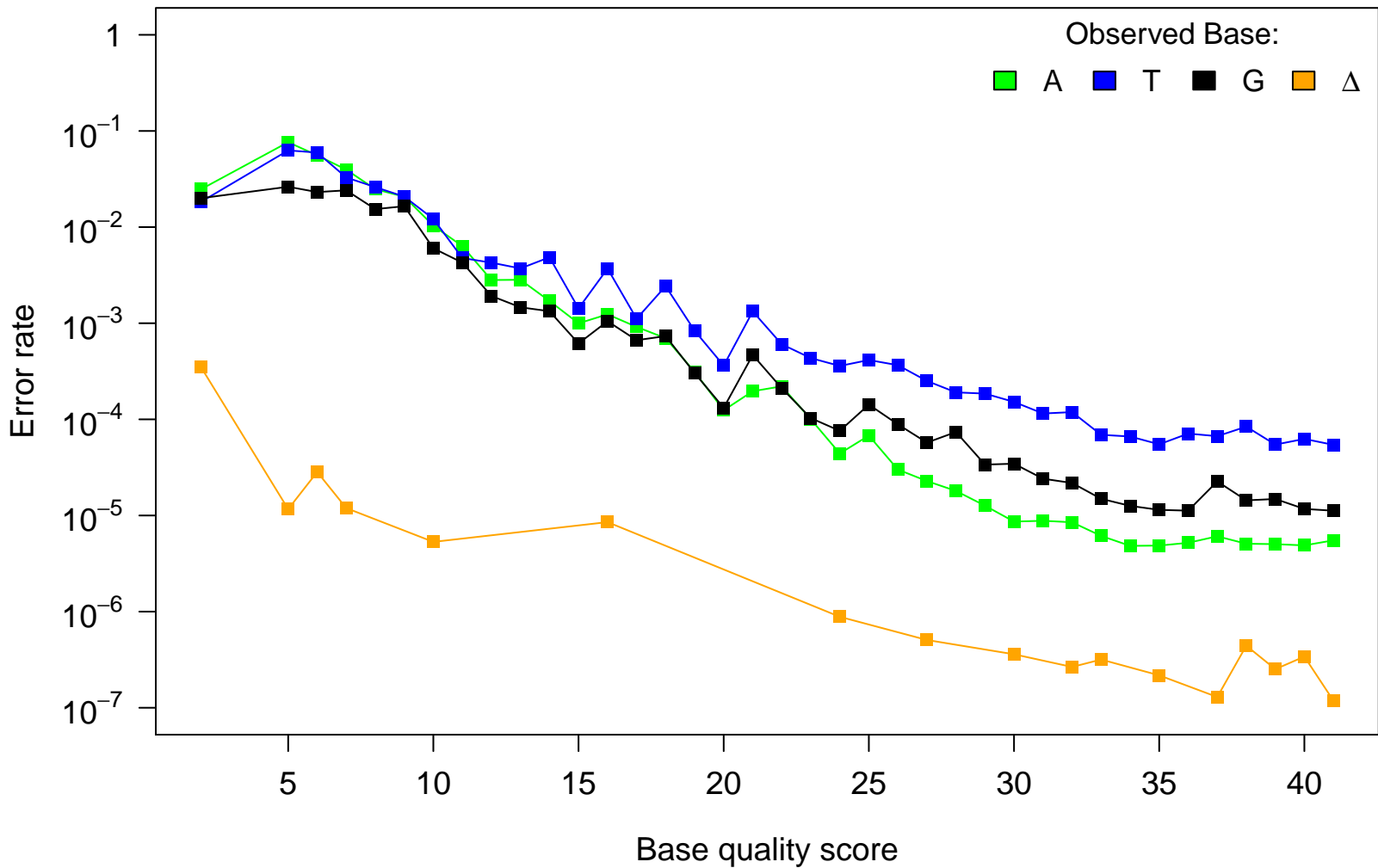
# Reference Base: T

Observed Base:

A C G  $\Delta$



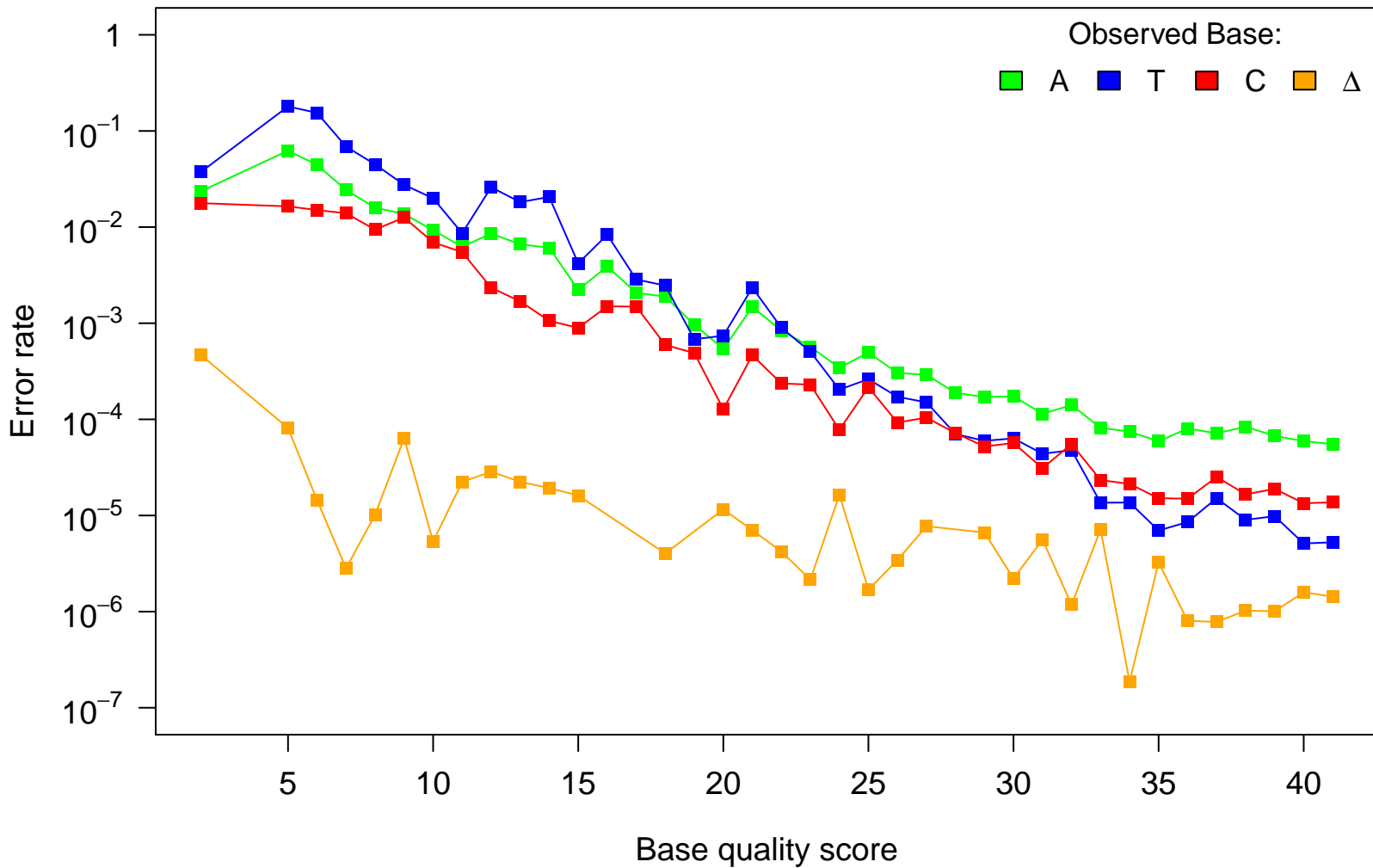
# Reference Base: C



# Reference Base: G

Observed Base:

A T C Δ

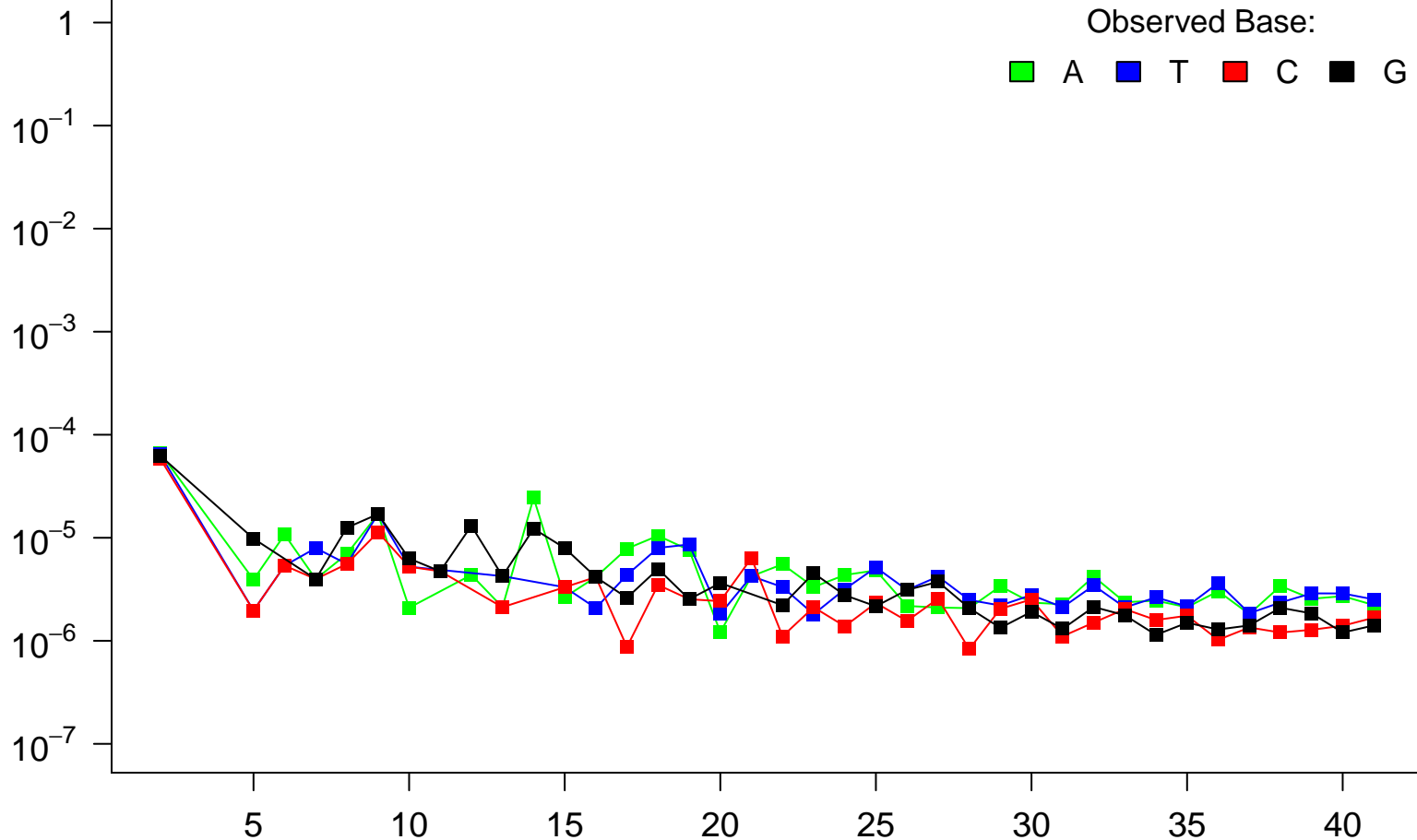


Reference Base:  $\Delta$

Observed Base:

■ A ■ T ■ C ■ G

Error rate



Base quality score