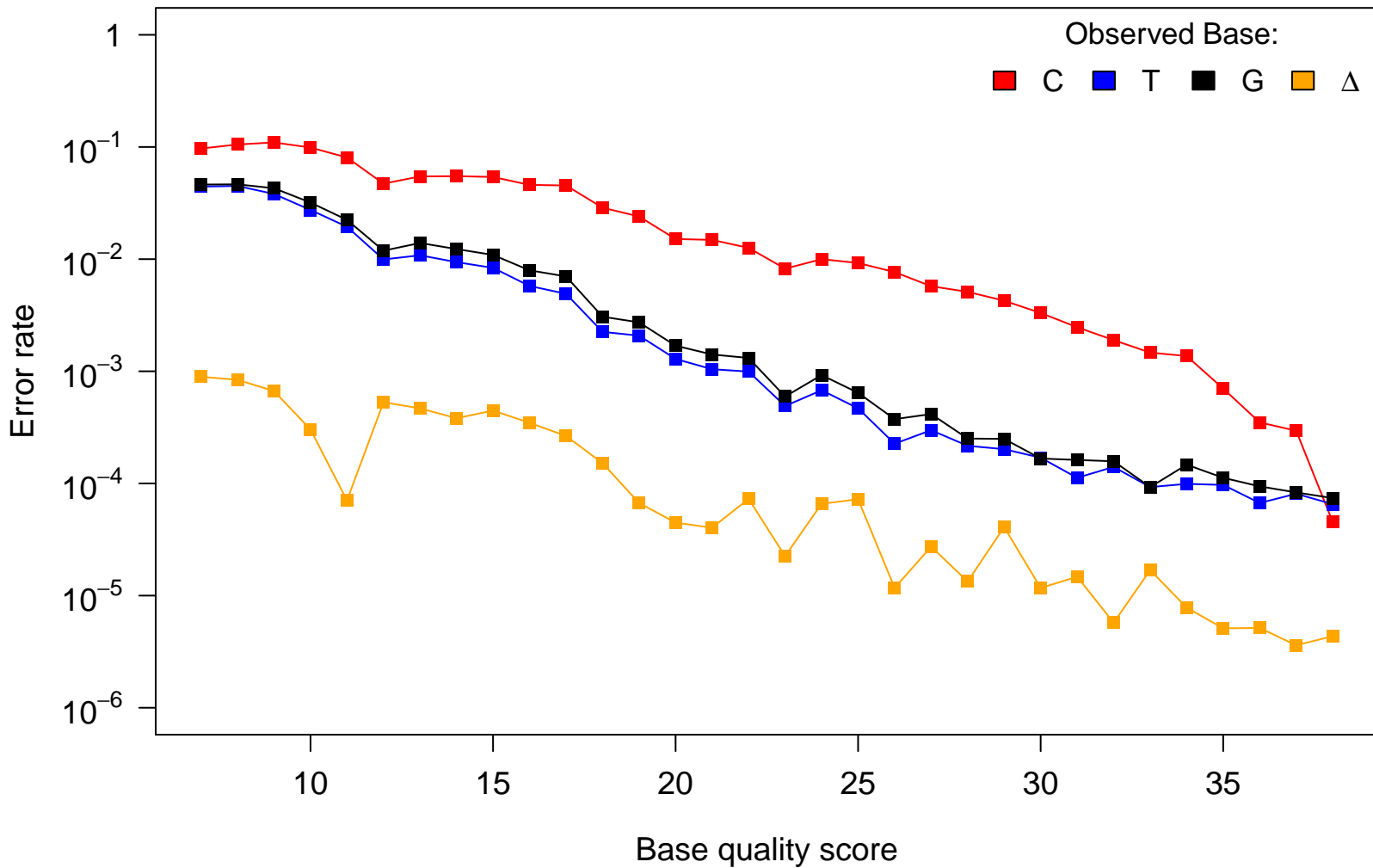
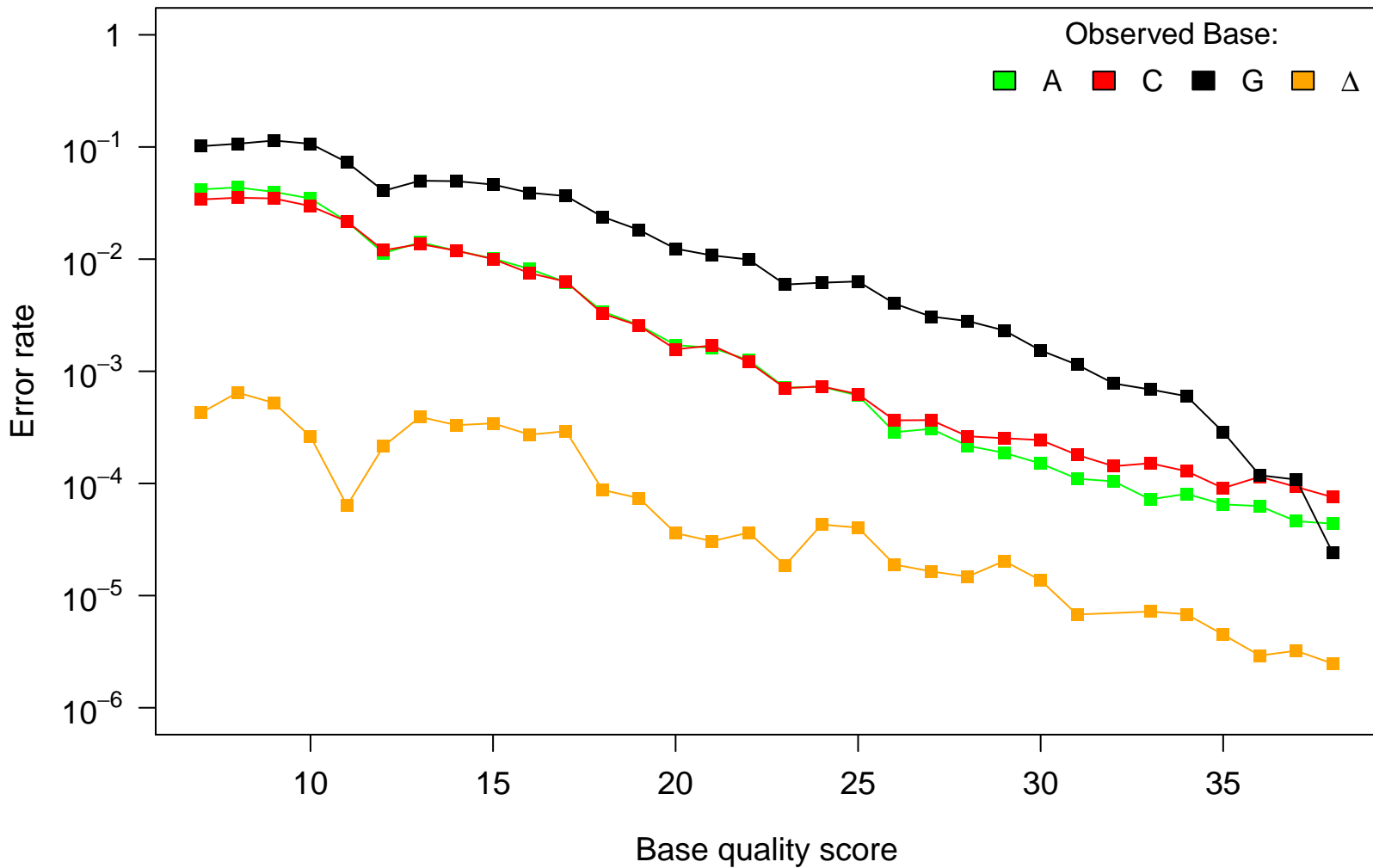


# Reference Base: A



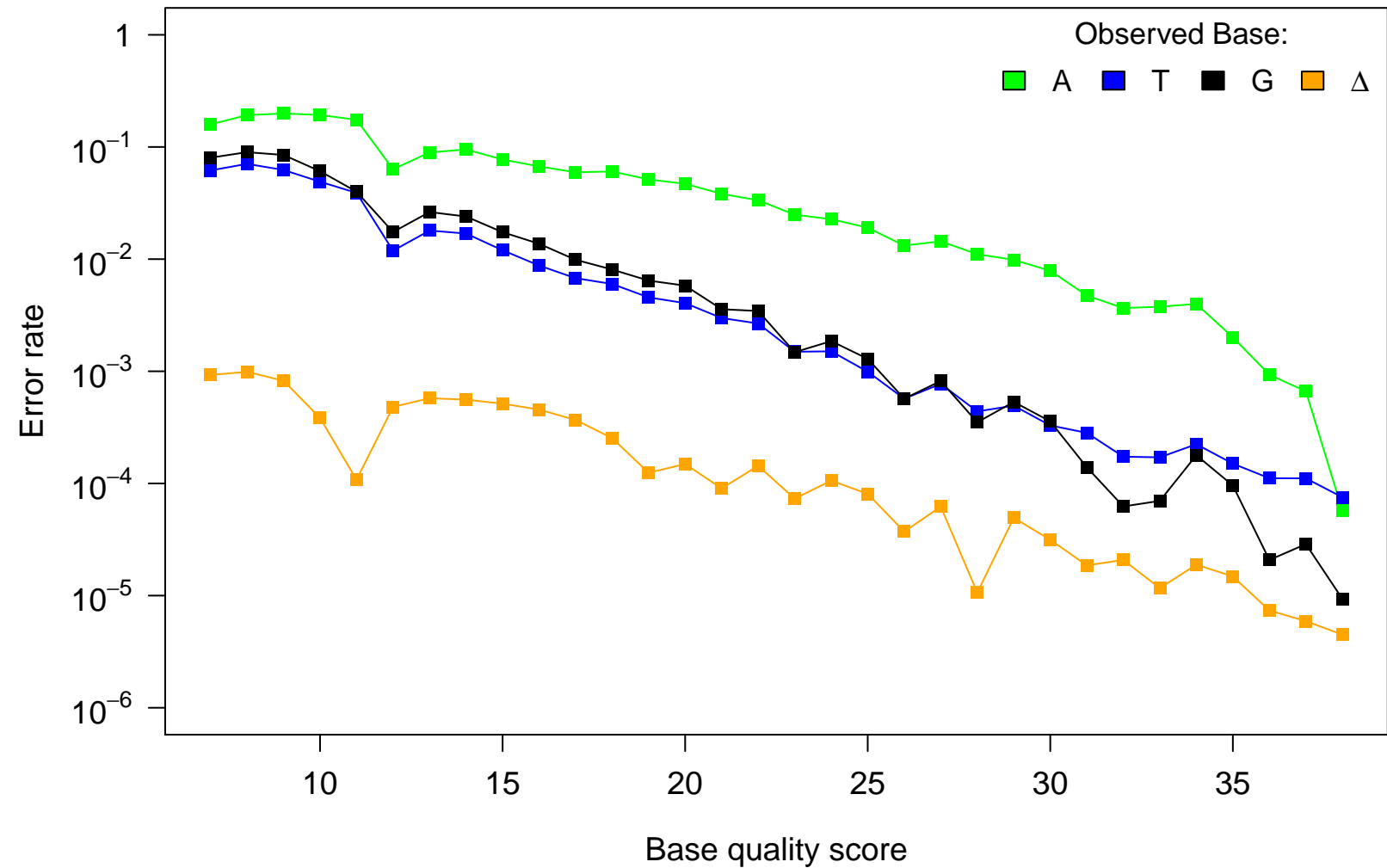
# Reference Base: T



# Reference Base: C

Observed Base:

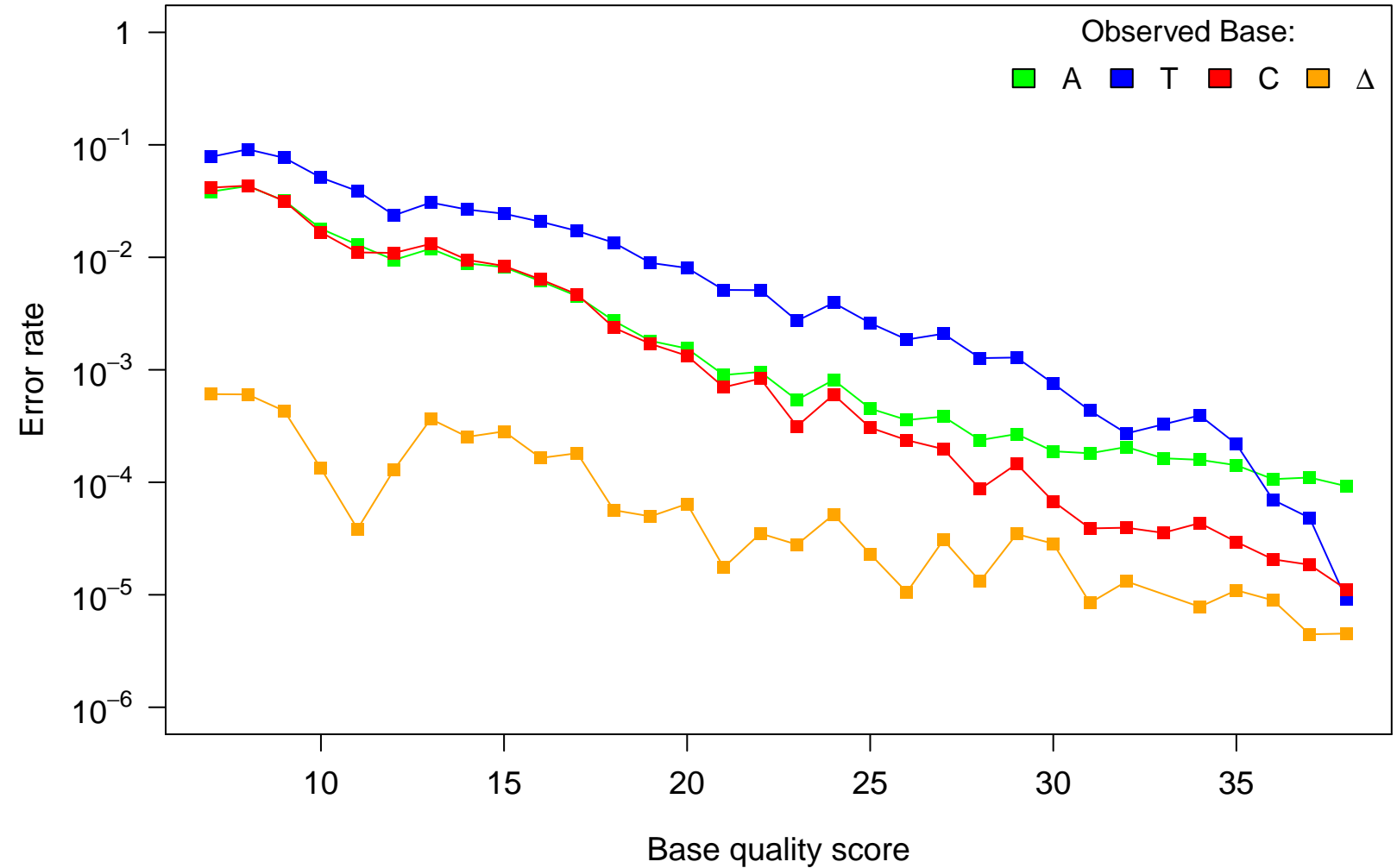
A T G Δ



# Reference Base: G

Observed Base:

■ A ■ T ■ C ■ Δ



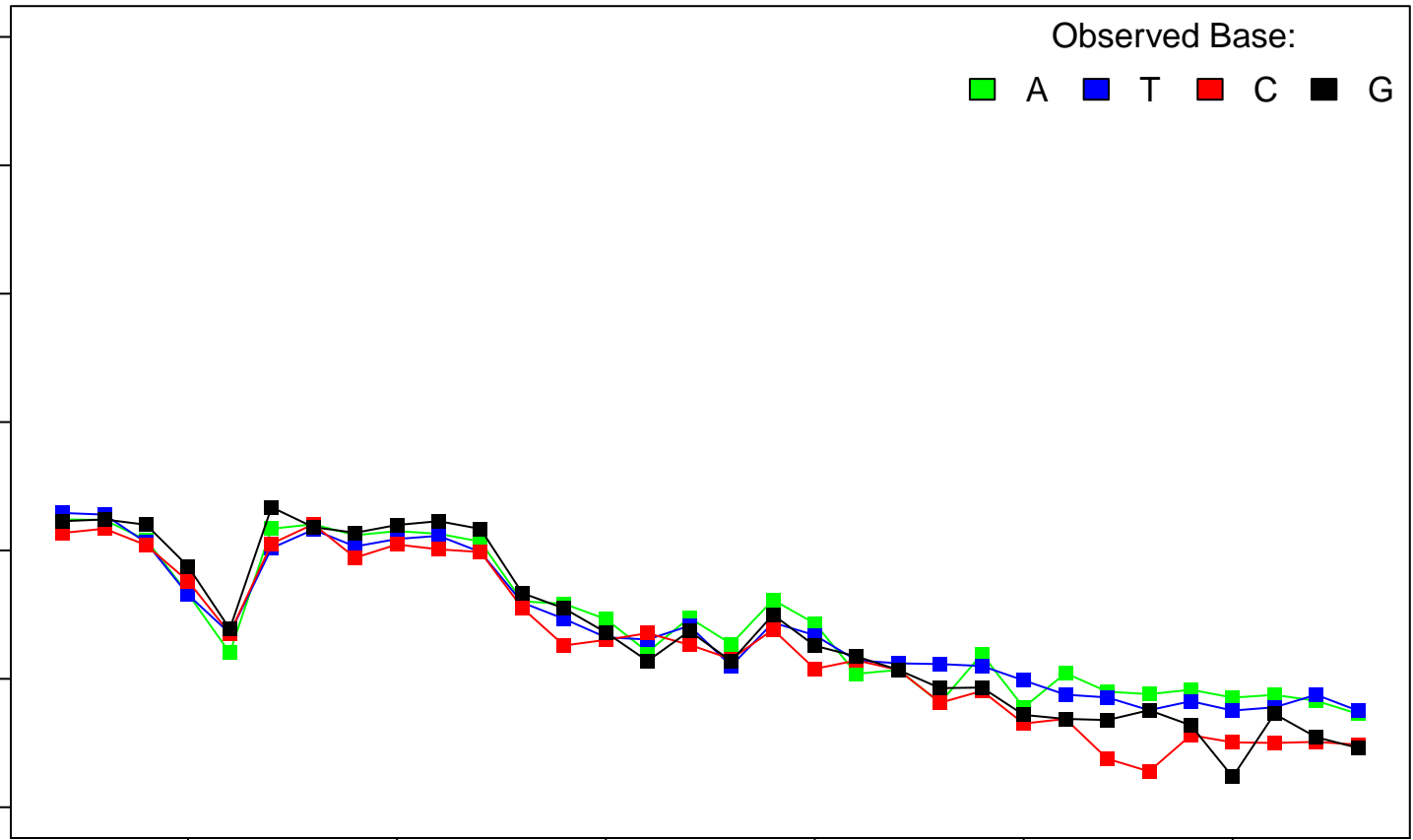
Reference Base:  $\Delta$

Observed Base:

■ A ■ T ■ C ■ G

Error rate

1  
 $10^{-1}$   
 $10^{-2}$   
 $10^{-3}$   
 $10^{-4}$   
 $10^{-5}$   
 $10^{-6}$



Base quality score