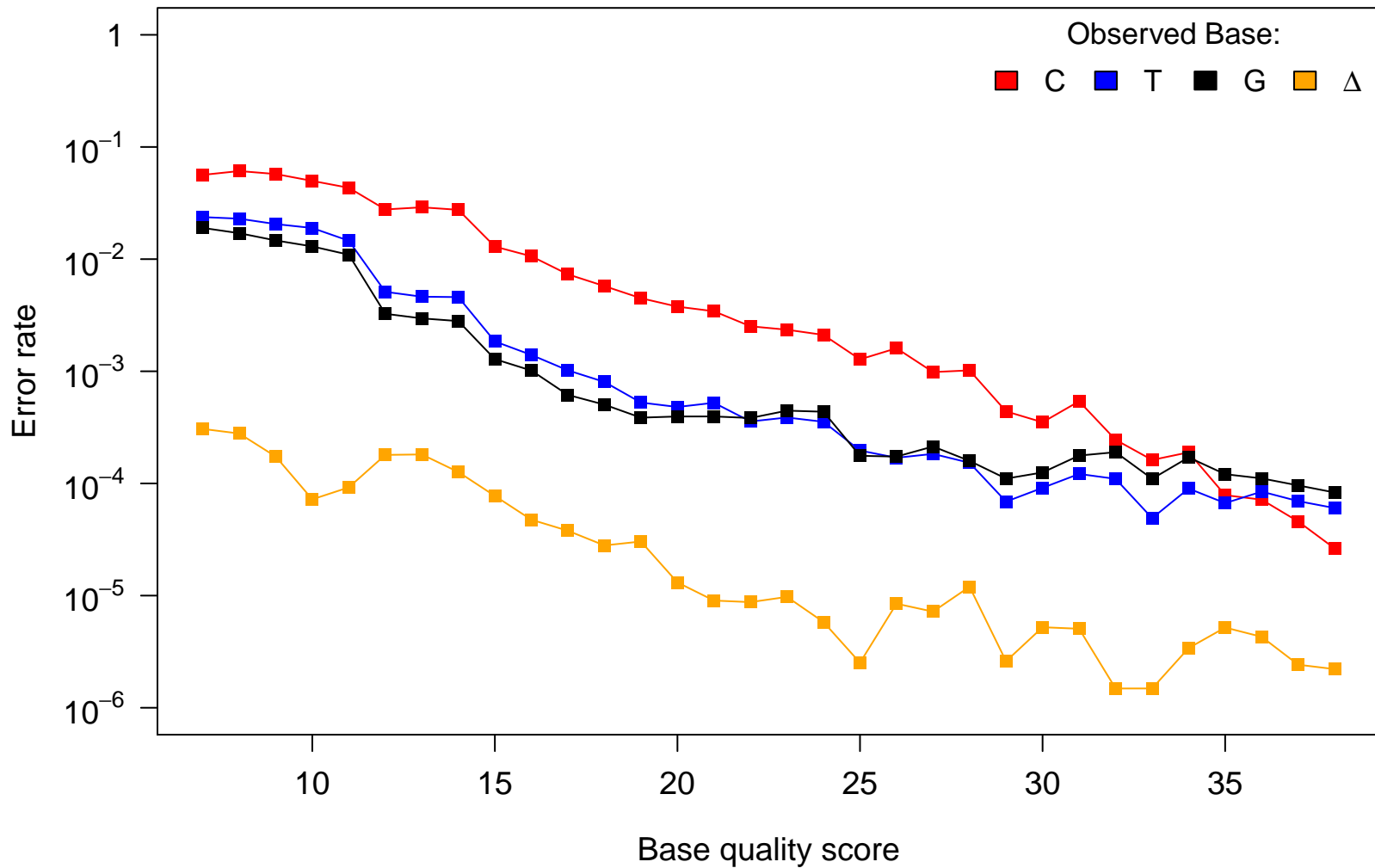


# Reference Base: A

Observed Base:

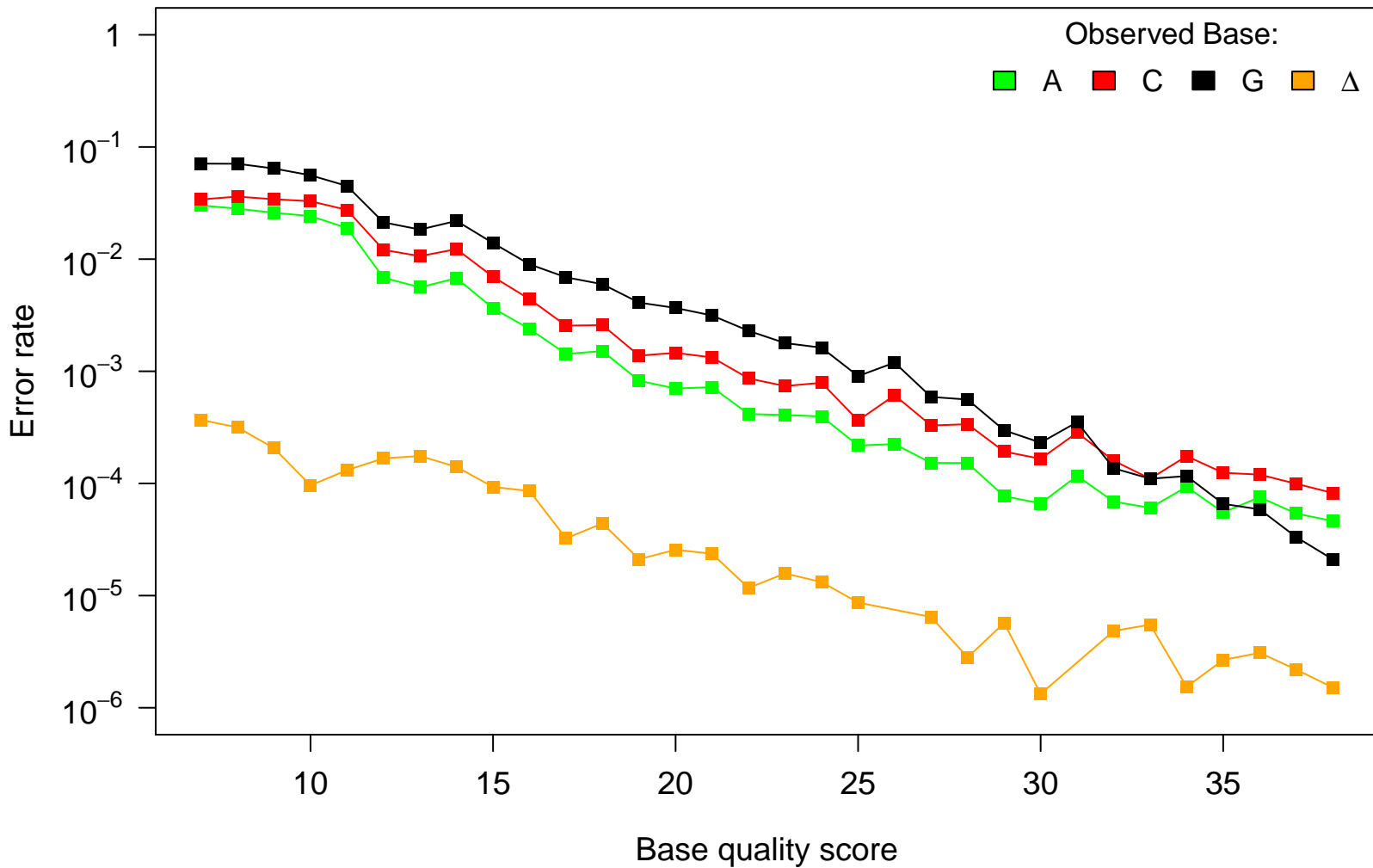
C T G  $\Delta$



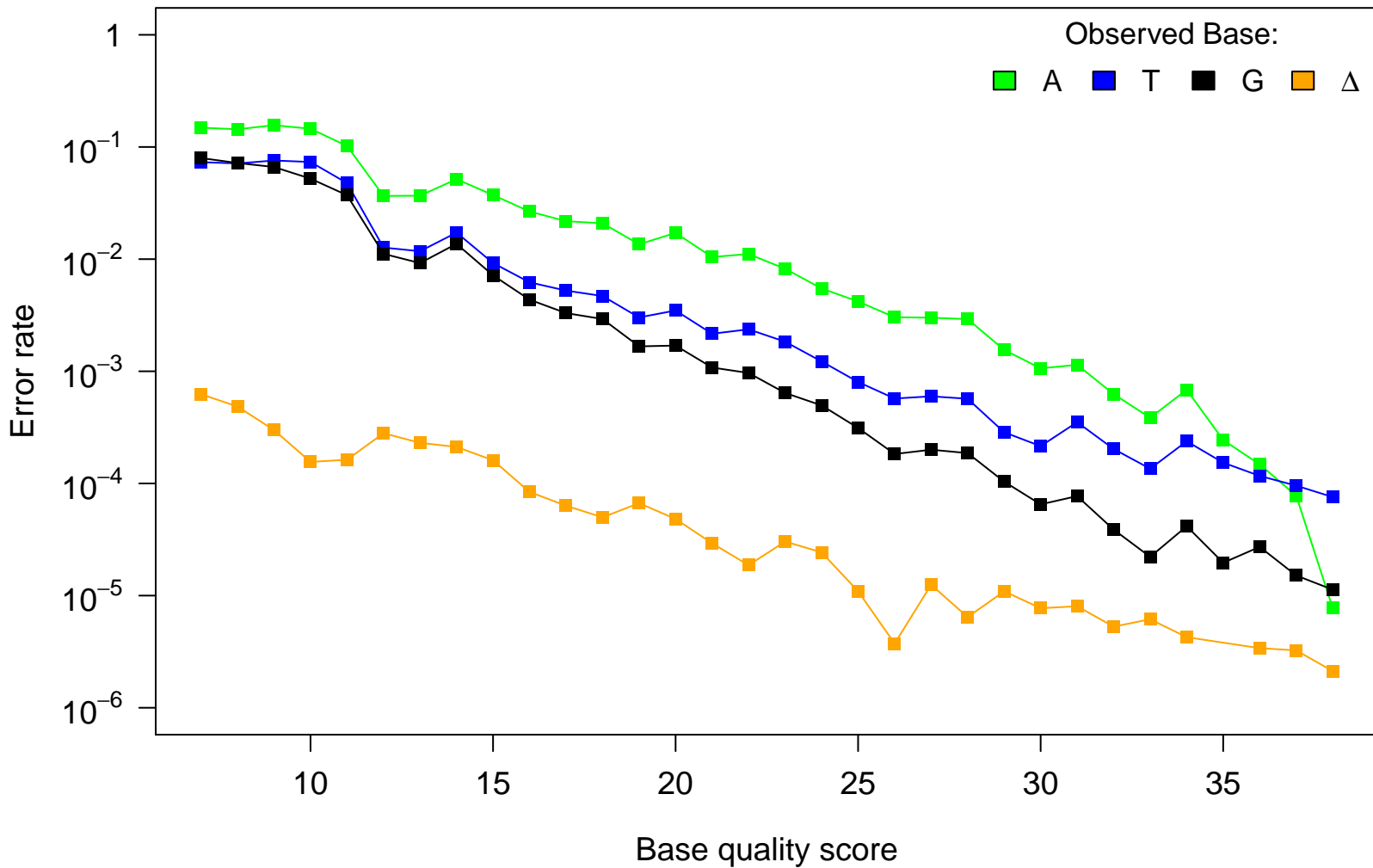
# Reference Base: T

Observed Base:

■ A ■ C ■ G ■ Δ



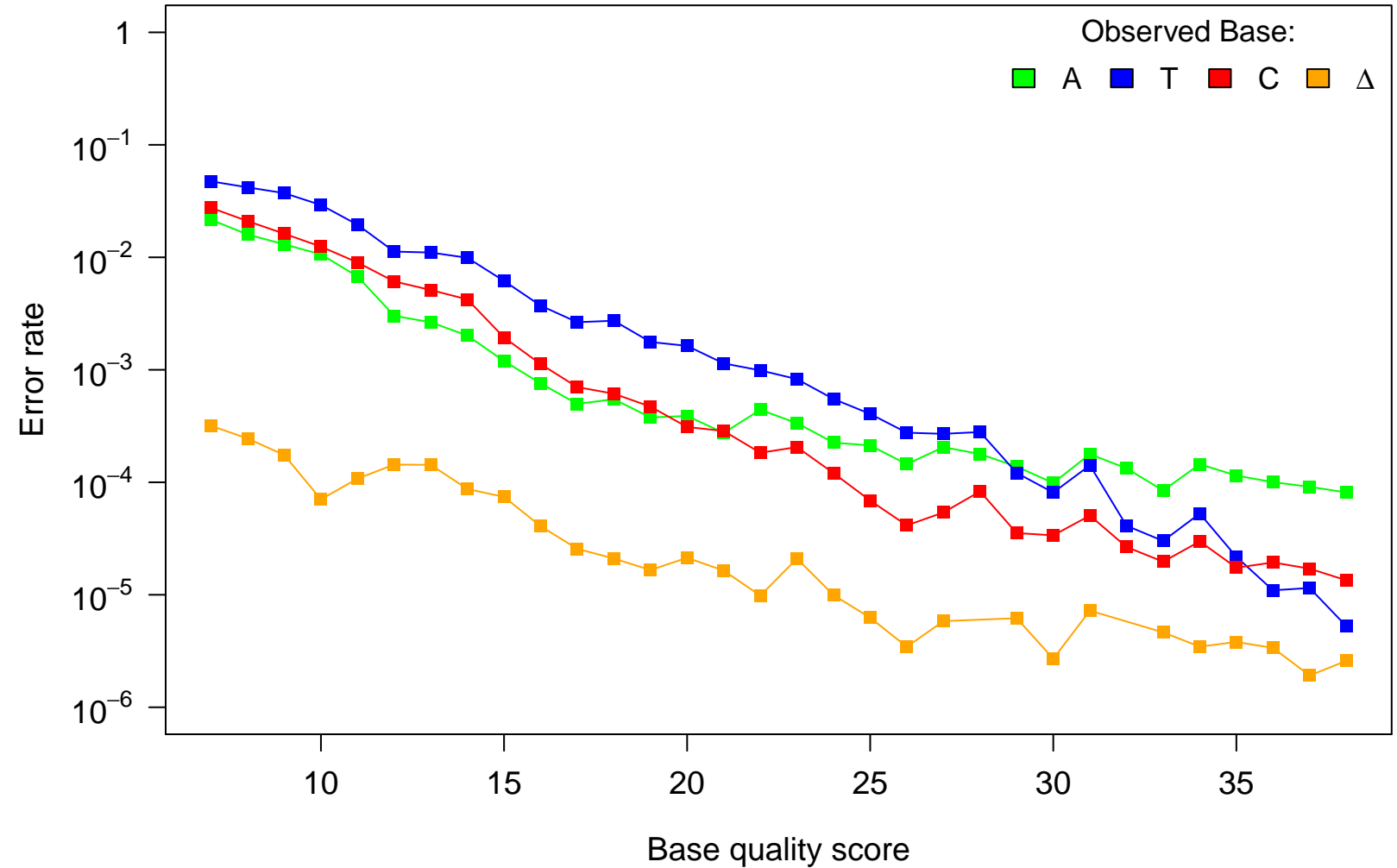
# Reference Base: C



# Reference Base: G

Observed Base:

A T C Δ



Reference Base:  $\Delta$

Observed Base:

A T C G

Error rate

Base quality score

