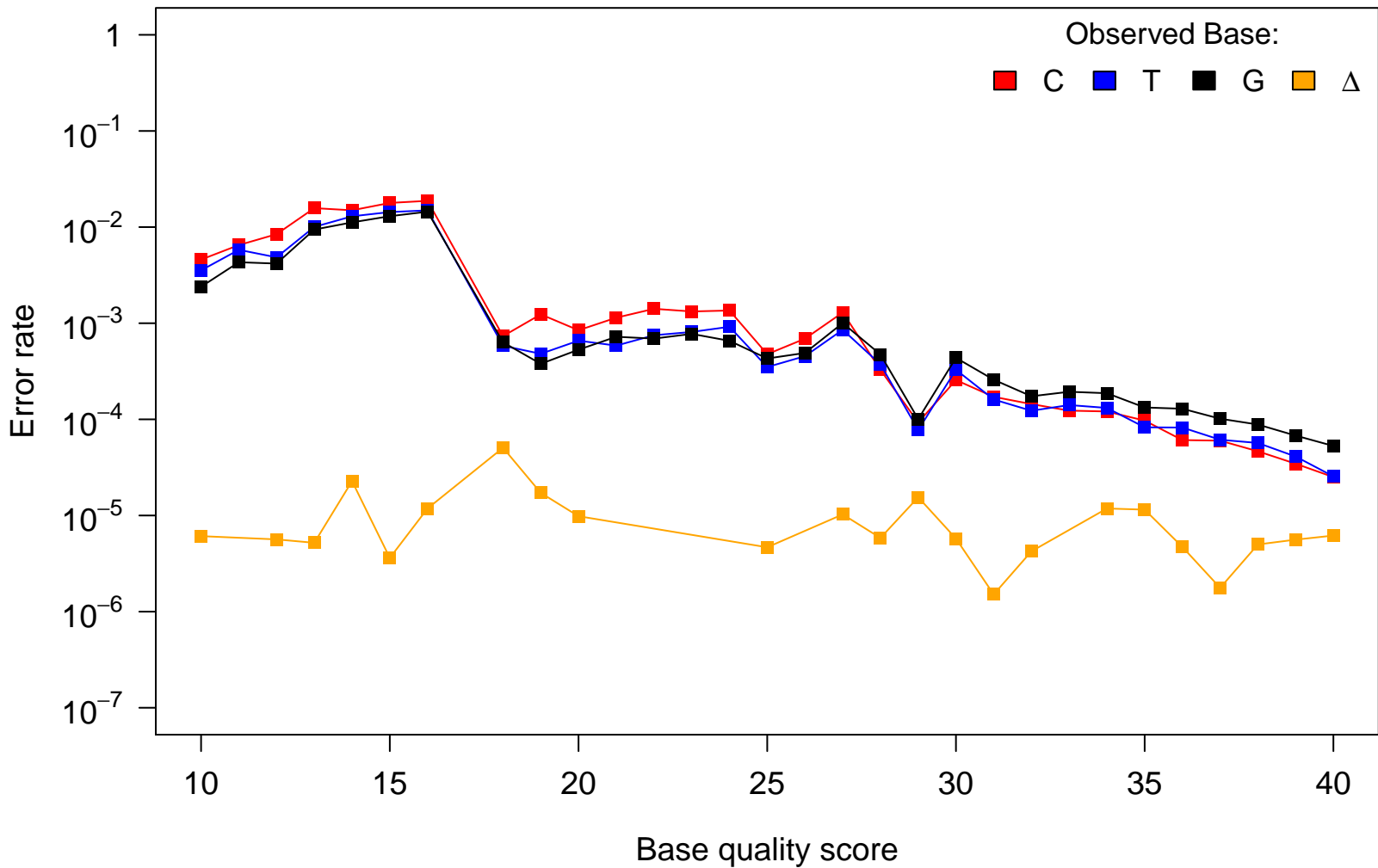


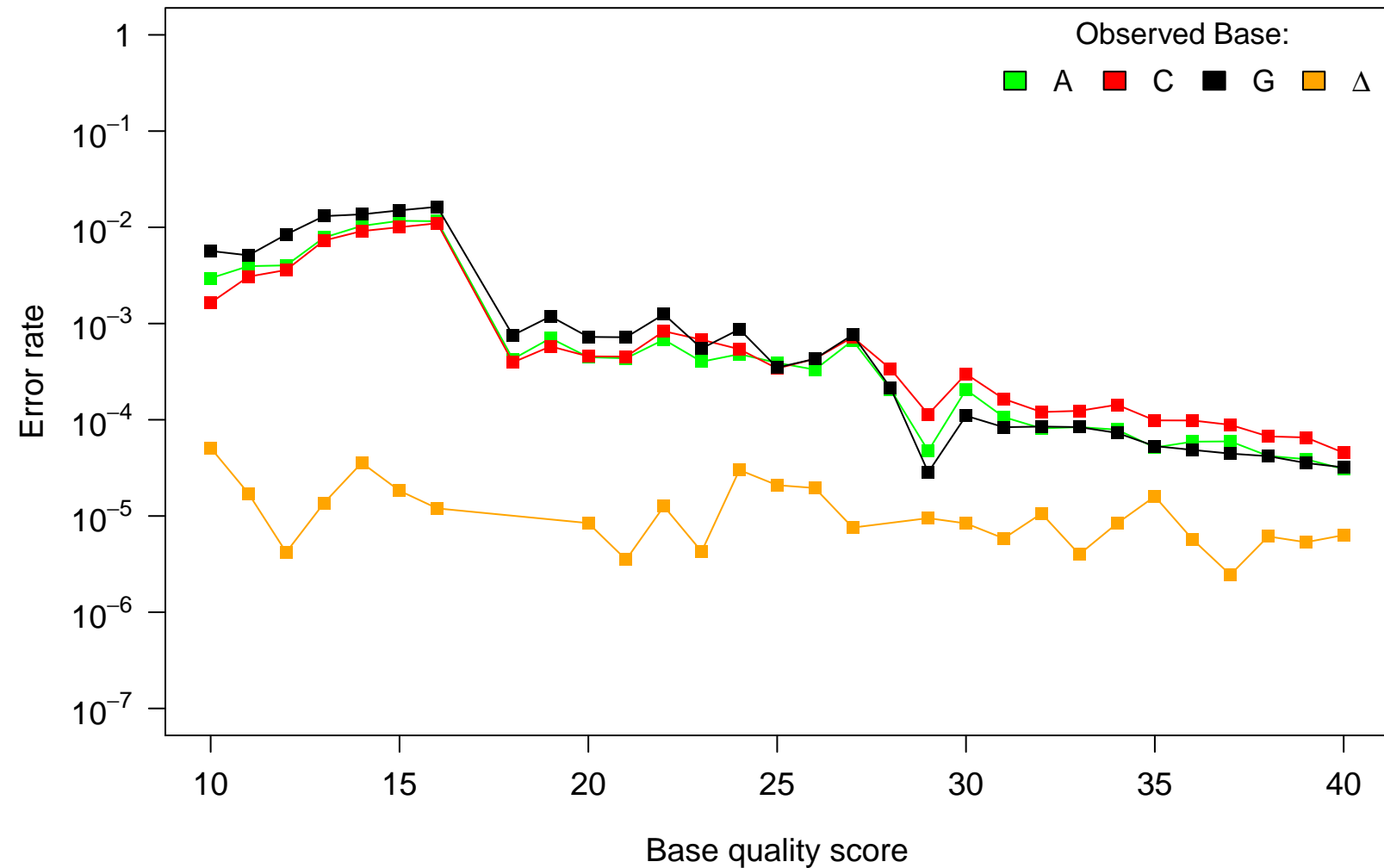
# Reference Base: A



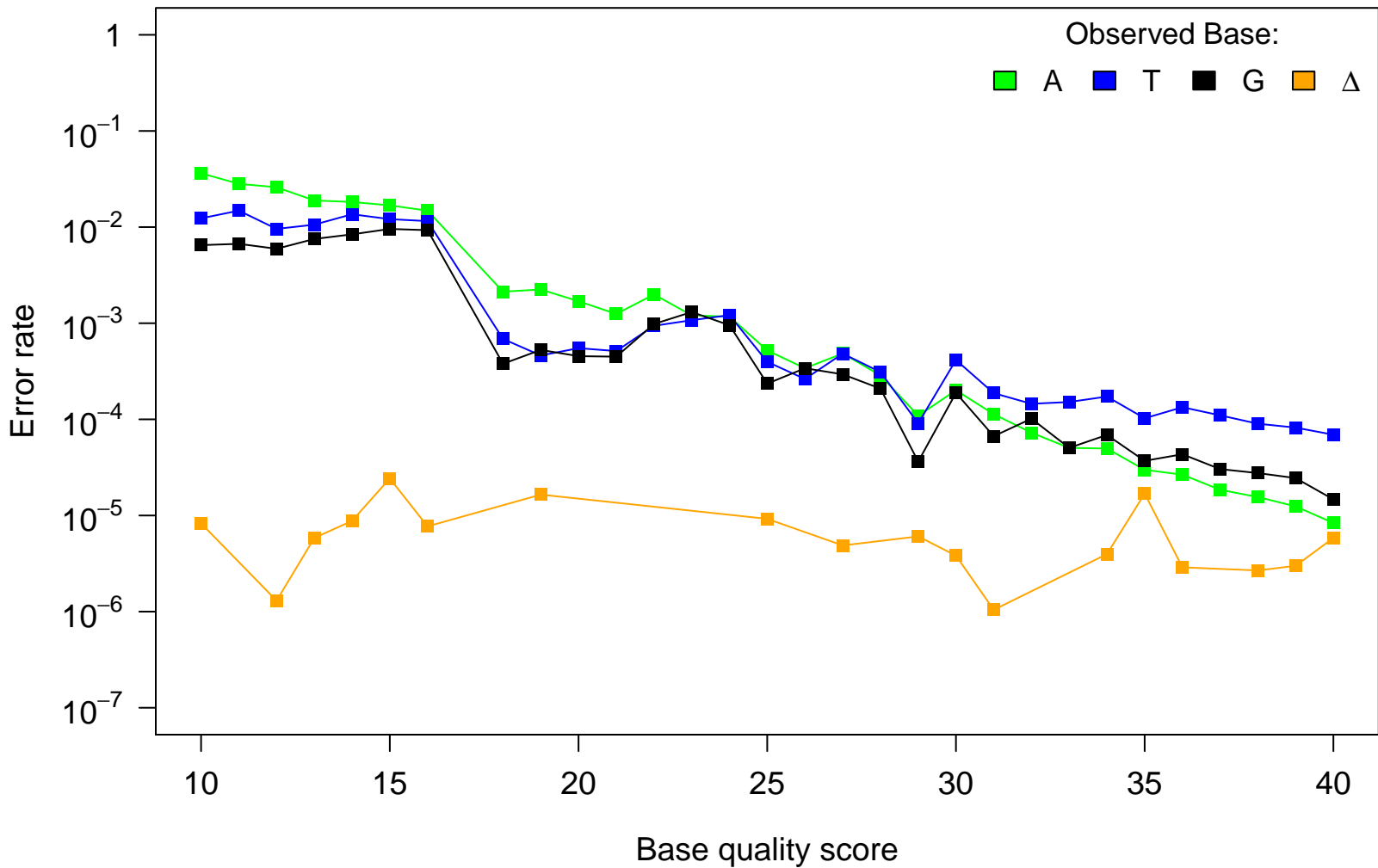
# Reference Base: T

Observed Base:

■ A ■ C ■ G ■ Δ



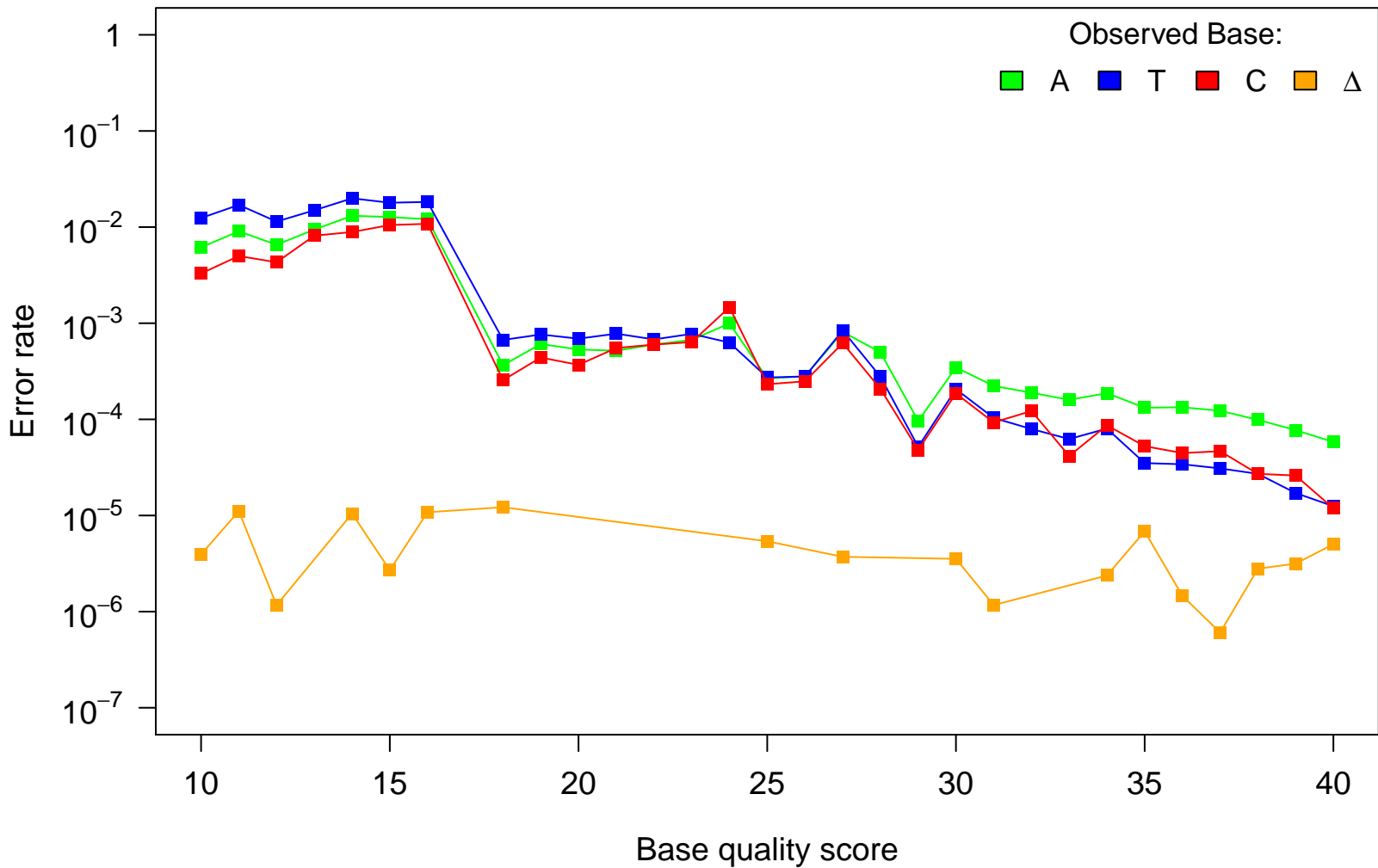
# Reference Base: C



# Reference Base: G

Observed Base:

■ A ■ T ■ C ■ Δ

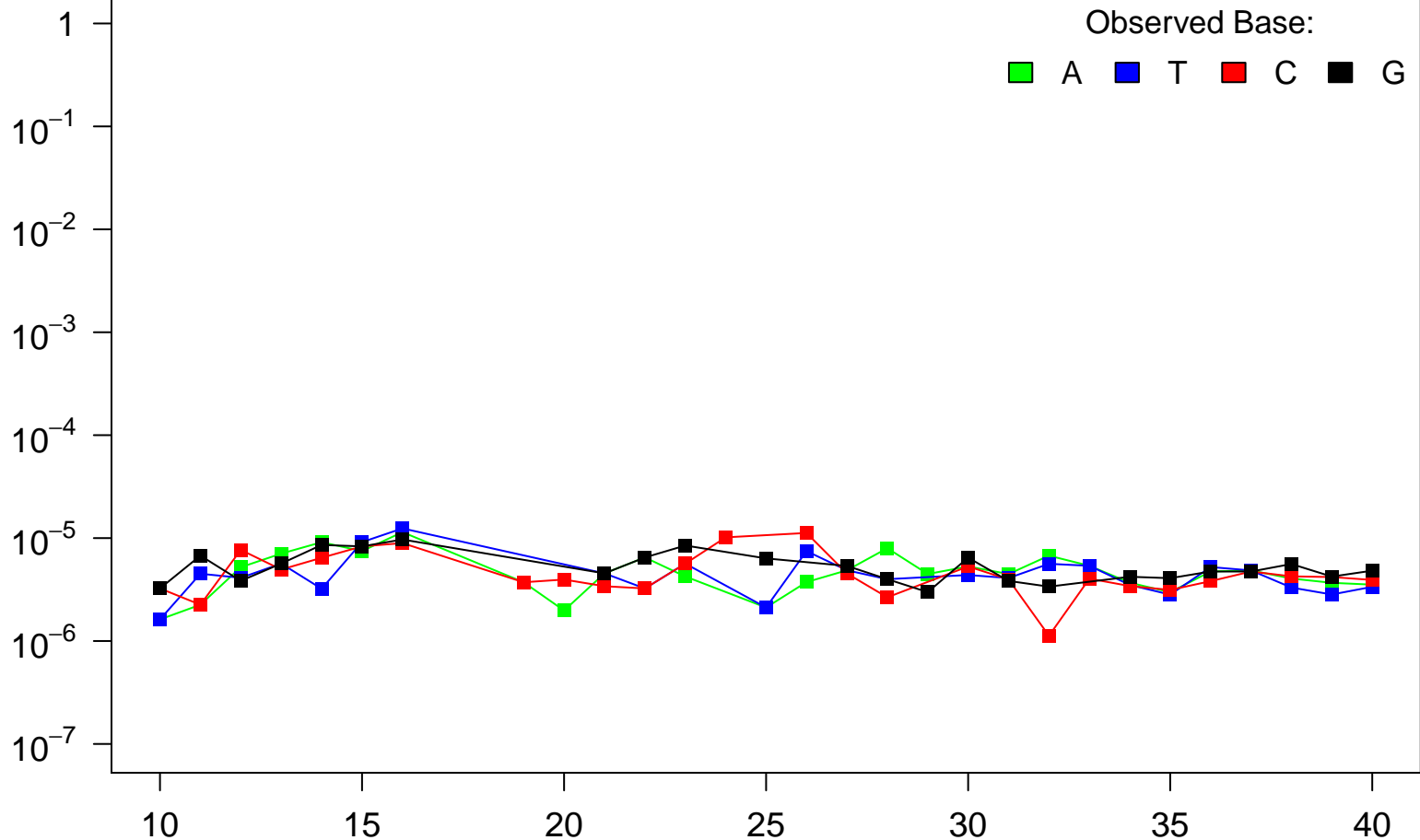


Reference Base:  $\Delta$

Observed Base:

■ A ■ T ■ C ■ G

Error rate



Base quality score